

EAST-WEST HIGHWAY BY NEW ROAD JUNCTION (IN) 13/7/2023					
Hours	Cat 1 (Motorcycle/keke)	Cat 2 (Car/light Vans)	Cat 3 (Lorries/Trucks)	Cat 4 (Buses/Coaches)	Total
6-7am	295	440	220	110	1065
7-8am	275	500	200	100	1075
8-9am	235	450	120	35	840
9-10am	240	315	90	20	665
10-11am	250	520	180	30	980
11-12am	215	500	190	20	925
12am-1pm	250	450	115	10	825
1-2pm	270	243	90	30	633
2-3pm	230	190	60	10	490
3-4pm	150	230	45	17	442
4-5pm	190	200	55	17	462
5-6pm	168	159	73	17	417
6-7pm	120	147	24	12	303
<b>Total</b>	<b>2888</b>	<b>4344</b>	<b>1462</b>	<b>428</b>	<b>9122</b>

EAST-WEST HIGHWAY BY NEW ROAD JUNCTION (IN) 14/7/2023					
Hours	Cat 1 (Motorcycle/keke)	Cat 2 (Car/light Vans)	Cat 3 (Lorries/Trucks)	Cat 4 (Buses/Coaches)	Total
6-7am	220	275	70	110	675
7-8am	250	350	55	40	695
8-9am	185	280	30	10	505
9-10am	155	225	30	3	413
10-11am	220	230	55	15	520
11-12am	185	190	52	3	430
12am-1pm	155	125	40	8	328
1-2pm	190	295	160	37	682
2-3pm	208	229	127	16	580
3-4pm	200	209	91	48	548
4-5pm	232	180	90	15	517
5-6pm	223	353	132	15	723
6-7pm	230	340	127	8	705
<b>Total</b>	<b>2653</b>	<b>3281</b>	<b>1059</b>	<b>328</b>	<b>7321</b>

EAST-WEST HIGHWAY BY NEW ROAD JUNCTION (IN) 15/7/2023					
Hours	Cat 1 (Motorcycle/keke)	Cat 2 (Car/light Vans)	Cat 3 (Lorries/Trucks)	Cat 4 (Buses/Coaches)	Total
6-7am	375	330	145	110	960
7-8am	250	3750	110	75	4185
8-9am	220	350	100	50	720
9-10am	203	185	55	50	493
10-11am	275	340	130	75	820
11-12am	210	250	100	52	612
12am-1pm	203	180	80	53	516
1-2pm	275	330	145	60	810
2-3pm	235	290	140	75	740
3-4pm	215	250	90	35	590
4-5pm	150	258	106	70	584
5-6pm	290	409	145	18	862
6-7pm	232	315	90	40	677
<b>Total</b>	<b>3133</b>	<b>7237</b>	<b>1436</b>	<b>763</b>	<b>12569</b>

EAST-WEST HIGHWAY BY NEW ROAD JUNCTION (IN) 16/7/2023					
Hours	Cat 1 (Motorcycle/keke)	Cat 2 (Car/light Vans)	Cat 3 (Lorries/Trucks)	Cat 4 (Buses/Coaches)	Total
6-7am	262	387	85	58	792
7-8am	262	353	85	65	765
8-9am	223	262	95	50	630
9-10am	182	210	75	50	517
10-11am	265	350	100	23	738
11-12am	265	358	63	12	698
12am-1pm	225	220	50	11	506
1-2pm	210	295	120	8	633
2-3pm	200	250	35	15	500
3-4pm	240	235	10	6	491
4-5pm	225	270	99	2	596
5-6pm	315	265	105	13	698
6-7pm	200	185	25	10	420
<b>Total</b>	<b>3074</b>	<b>3640</b>	<b>947</b>	<b>323</b>	<b>7984</b>

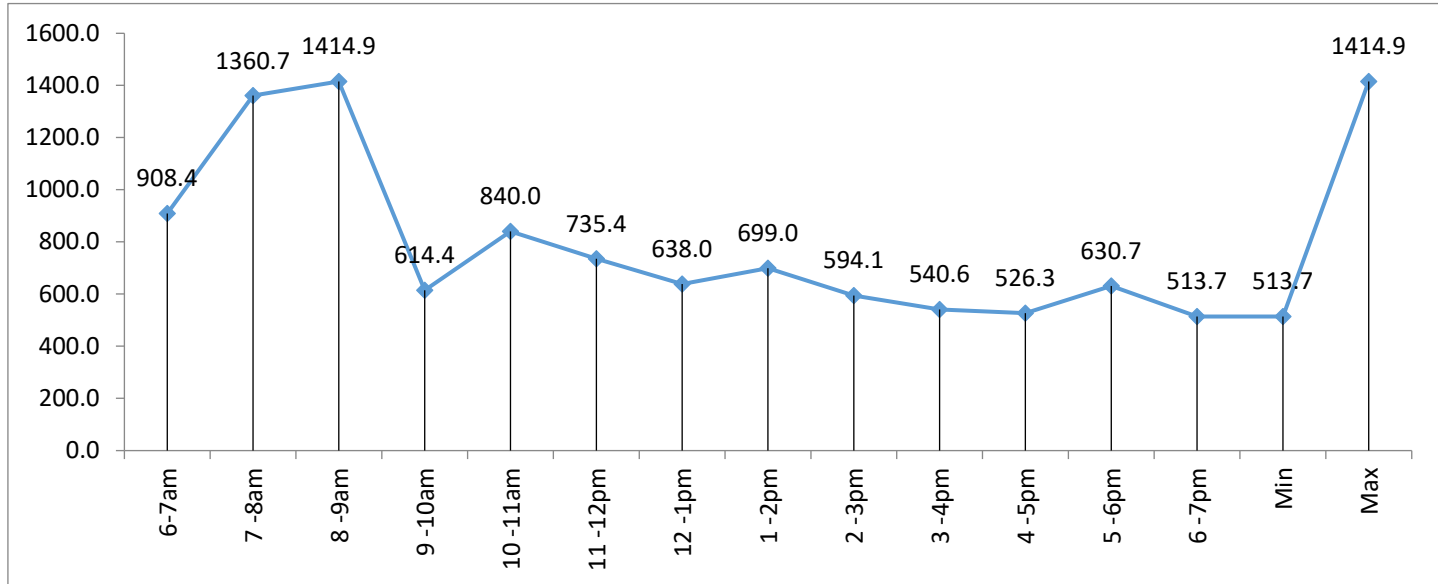
EAST-WEST HIGHWAY BY NEW ROAD JUNCTION (IN) 17/7/2023					
Hours	Cat 1 (Motorcycle/keke)	Cat 2 (Car/light Vans)	Cat 3 (Lorries/Trucks)	Cat 4 (Buses/Coaches)	Total
6-7am	282	573	178	86	1119
7-8am	242	463	123	77	905
8-9am	248	452	101	68	869
9-10am	200	322	112	57	691
10-11am	277	450	92	56	875
11-12am	232	372	103	52	759
12am-1pm	246	302	67	45	660
1-2pm	310	380	123	13	826
2-3pm	220	275	103	8	606
3-4pm	265	290	110	0	665
4-5pm	189	245	98	13	545
5-6pm	205	260	90	12	567
6-7pm	200	185	75	14	474
<b>Total</b>	<b>3116</b>	<b>4569</b>	<b>1375</b>	<b>501</b>	<b>9561</b>

EAST-WEST HIGHWAY BY NEW ROAD JUNCTION (IN) 18/7/2023					
Hours	Cat 1 (Motorcycle/keke)	Cat 2 (Car/light Vans)	Cat 3 (Lorries/Trucks)	Cat 4 (Buses/Coaches)	Total
6-7am	182	553	162	62	959
7-8am	252	507	145	53	957
8-9am	227	506	132	51	916

Category	Summary	Thursday 13/7/23	Friday 14/7/23	Saturday 15/7/23	Sunday 16/7/23	Monday 17/7/23	Tuesday 18/7/23	Wednesday 19/7/23
Cat 1 (Motorcycle/Keke)		2888	2653	3133	3074	3116	2907	3244
Cat 2 (Car and Light Vans)		4344	3281	7237	3640	4569	4833	9456
Cat 3 (Lorries and Trucks)		1462	1059	1436	947	1375	1365	922
Cat 4 (Buses and Coaches)		428	328	763	323	501	475	355
<b>Total</b>		<b>9122</b>	<b>7321</b>	<b>12569</b>	<b>7984</b>	<b>9561</b>	<b>9580</b>	<b>13977</b>

Time	Thursday 13/7/23	Friday 14/7/23	Saturday 15/7/23	Sunday 16/7/23	Monday 17/7/23	Tuesday 18/7/23	Wednesday 19/7/23	Ave	Min	Max	Total
6-7am	1065	675	960	792	1119	959	789	908.4	675	1119	6359
7-8am	1075	695	4185	765	905	957	943	1360.7	695	4185	9525
8-9am	840	505	720	630	869	916	5424	1414.9	505	5424	9904
9-10am	665	413	493	517	691	754	768	614.4	413	768	4301
10-11am	980	520	820	738	875	985	962	840.0	520	985	5880
11-12pm	925	430	612	698	759	877	847	735.4	430	925	5148
12-1pm	825	328	516	506	660	900	731	638.0	328	900	4466
1-2pm	633	682	810	633	826	690	619	699.0	619	826	4893
2-3pm	490	580	740	500	606	689	554	594.1	490	740	4159
3-4pm	442	548	590	491	665	480	568	540.6	442	665	3784
4-5pm	462	517	584	596	545	365	615	526.3	365	615	3684
5-6pm	417	723	862	698	567	563	585	630.7	417	862	4415
6-7pm	303	705	677	420	474	445	572	513.7	303	705	3596
<b>Total</b>	<b>9122</b>	<b>7321</b>	<b>12569</b>	<b>7984</b>	<b>9561</b>	<b>9580</b>	<b>13977</b>	<b>10016.3</b>	<b>6202</b>	<b>18719</b>	<b>70114</b>

6-7am	7-8am	8-9am	9-10am	10-11am	11-12pm	12-1pm	1-2pm	2-3pm	3-4pm	4-5pm	5-6pm	6-7pm	Min	Max
908.4	1360.7	1414.9	614.4	840.0	735.4	638.0	699.0	594.1	540.6	526.3	630.7	513.7	513.7	1414.9



9-10am	200	390	117	47	754
10-11am	277	503	143	62	985
11-12am	257	418	122	80	877
12am-1pm	257	453	138	52	900
1-2pm	185	385	100	20	690
2-3pm	290	290	85	24	689
3-4pm	220	185	65	10	480
4-5pm	135	200	27	3	365
5-6pm	250	210	95	8	563
6-7pm	175	233	34	3	445
<b>Total</b>	<b>2907</b>	<b>4833</b>	<b>1365</b>	<b>475</b>	<b>9580</b>

EAST-WEST HIGHWAY BY NEW ROAD JUNCTION (IN) 19/7/2023					
Hours	Cat 1 (Motorcycle/keke)	Cat 2 (Car/light Vans)	Cat 3 (Lorries/Trucks)	Cat 4 (Buses/Coaches)	Total
6-7am	273	352	108	56	789
7-8am	267	503	127	46	943
8-9am	262	5036	73	53	5424
9-10am	227	418	82	41	768
10-11am	275	497	162	28	962
11-12am	252	456	107	32	847
12am-1pm	222	423	68	18	731
1-2pm	277	283	48	11	619
2-3pm	215	302	18	19	554
3-4pm	285	260	20	3	568
4-5pm	265	293	39	18	615
5-6pm	234	294	40	17	585
6-7pm	190	339	30	13	572
<b>Total</b>	<b>3244</b>	<b>9456</b>	<b>922</b>	<b>355</b>	<b>13977</b>

EAST-WEST HIGHWAY BY NEW ROAD JUNCTION (IN) 13/7/2023					
Hours	Cat 1 (Motorcycle/keke)	Cat 2 (Car/light Vans)	Cat 3 (Lorries/Trucks)	Cat 4 (Buses/Coaches)	Total
6-7am	260	465	80	55	860
7-8am	300	400	65	50	815
8-9am	230	350	60	25	665
9-10am	180	270	30	30	510
10-11am	220	495	135	17	867
11-12am	230	450	200	15	895
12am-1pm	200	440	120	50	810
1-2pm	293	255	105	3	656
2-3pm	208	200	38	6	452
3-4pm	240	250	54	45	589
4-5pm	185	236	24	50	495
5-6pm	195	210	145	20	570
6-7pm	138	145	13	13	309
<b>Total</b>	<b>2879</b>	<b>4166</b>	<b>1069</b>	<b>379</b>	<b>8493</b>

EAST-WEST HIGHWAY BY NEW ROAD JUNCTION (OUT) 14/7/2023					
Hours	Cat 1 (Motorcycle/keke)	Cat 2 (Car/light Vans)	Cat 3 (Lorries/Trucks)	Cat 4 (Buses/Coaches)	Total
6-7am	200	275	55	20	550
7-8am	210	300	55	50	615
8-9am	180	200	20	30	430
9-10am	155	145	15	3	318
10-11am	173	200	55	20	448
11-12am	170	215	63	30	478
12am-1pm	150	150	42	50	392
1-2pm	282	143	160	15	600
2-3pm	225	300	140	8	673
3-4pm	155	250	63	12	480
4-5pm	245	253	97	64	659
5-6pm	245	221	165	20	651
6-7pm	253	253	288	13	807
<b>Total</b>	<b>2643</b>	<b>2905</b>	<b>1218</b>	<b>335</b>	<b>7101</b>

EAST-WEST HIGHWAY BY NEW ROAD JUNCTION (OUT) 15/7/2023					
Hours	Cat 1 (Motorcycle/keke)	Cat 2 (Car/light Vans)	Cat 3 (Lorries/Trucks)	Cat 4 (Buses/Coaches)	Total
6-7am	220	305	110	55	690
7-8am	256	312	100	80	748
8-9am	208	258	75	85	626
9-10am	180	215	70	45	510
10-11am	200	330	110	110	750
11-12am	175	225	90	65	555
12am-1pm	185	185	70	50	490
1-2pm	240	320	165	25	750
2-3pm	250	350	250	17	867
3-4pm	300	280	125	140	845
4-5pm	190	270	90	31	581
5-6pm	275	397	158	30	860
6-7pm	245	320	100	16	681
<b>Total</b>	<b>2924</b>	<b>3767</b>	<b>1513</b>	<b>749</b>	<b>8953</b>

EAST-WEST HIGHWAY BY NEW ROAD JUNCTION (OUT) 16/7/2023					
Hours	Cat 1 (Motorcycle/keke)	Cat 2 (Car/light Vans)	Cat 3 (Lorries/Trucks)	Cat 4 (Buses/Coaches)	Total
6-7am	225	315	95	60	695
7-8am	225	315	90	45	675
8-9am	205	235	50	40	530
9-10am	185	195	52	0	432
10-11am	270	373	80	28	751
11-12am	255	368	100	30	753
12am-1pm	218	208	53	10	489
1-2pm	230	252	110	12	604
2-3pm	158	22	63	10	253
3-4pm	220	233	33	2	488
4-5pm	125	227	60	4	416
5-6pm	225	253	135	10	623
6-7pm	253	225	40	8	526
<b>Total</b>	<b>2794</b>	<b>3221</b>	<b>961</b>	<b>259</b>	<b>7235</b>

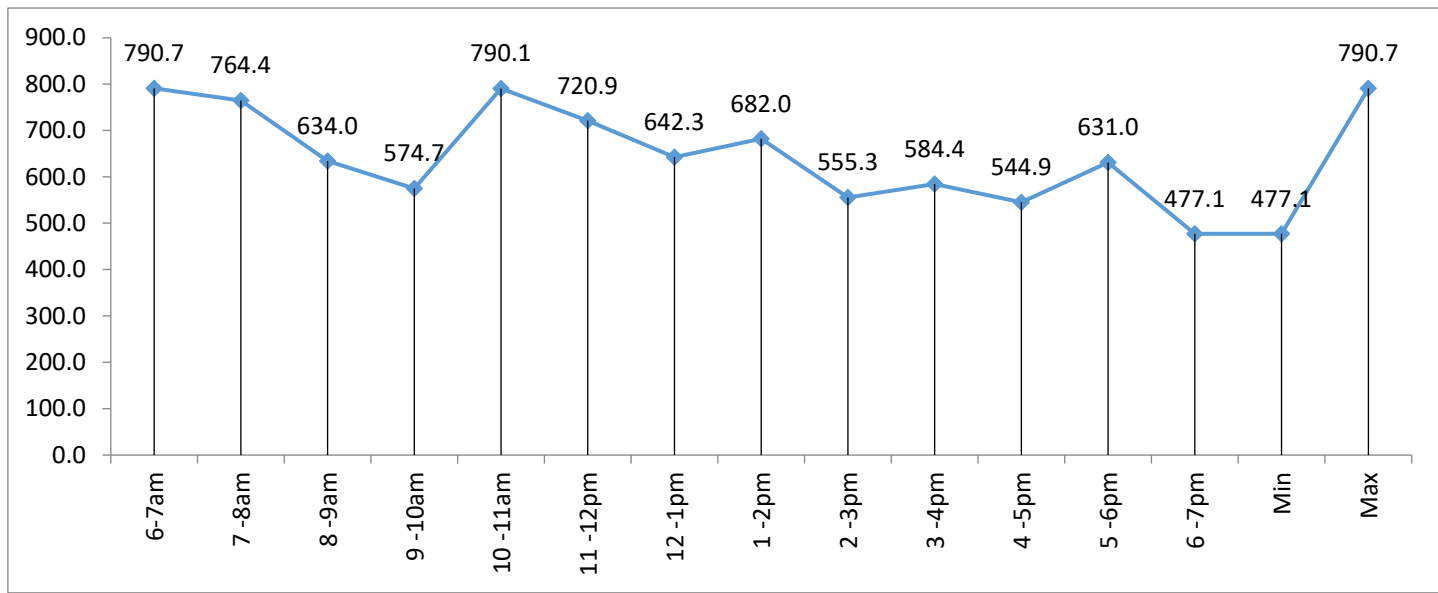
EAST-WEST HIGHWAY BY NEW ROAD JUNCTION (OUT) 17/7/2023					
Hours	Cat 1 (Motorcycle/keke)	Cat 2 (Car/light Vans)	Cat 3 (Lorries/Trucks)	Cat 4 (Buses/Coaches)	Total
6-7am	272	498	112	66	948
7-8am	227	403	108	58	796
8-9am	252	333	58	53	696
9-10am	277	497	97	68	939
10-11am	263	417	67	61	808
11-12am	215	387	72	65	739
12am-1pm	187	313	95	48	643
1-2pm	320	305	85	18	728
2-3pm	251	210	29	20	510
3-4pm	220	285	65	12	582
4-5pm	225	280	95	16	616
5-6pm	285	200	85	15	585
6-7pm	234	153	40	9	436
<b>Total</b>	<b>3228</b>	<b>4281</b>	<b>1008</b>	<b>509</b>	<b>9026</b>

EAST-WEST HIGHWAY BY NEW ROAD JUNCTION (OUT) 18/7/2023					
Hours	Cat 1 (Motorcycle/keke)	Cat 2 (Car/light Vans)	Cat 3 (Lorries/Trucks)	Cat 4 (Buses/Coaches)	Total
6-7am	257	498	92	58	905
7-8am	261	416	98	57	832
8-9am	232	387	77	22	718

Category	Thursday 13/7/23	Friday 14/7/23	Saturday 15/7/23	Sunday 16/7/23	Monday 17/7/23	Tuesday 18/7/23	Wednesday 19/7/23
Cat 1 (Motorcycle/Keke)	2879	2643	2924	2794	3228	2932	3270
Cat 2 (Car and Light Vans)	4166	2905	3767	3221	4281	4433	4642
Cat 3 (Lorries and Trucks)	1069	1218	1513	961	1008	995	944
Cat 4 (Buses and Coaches)	379	335	749	259	509	407	312
<b>Total</b>	<b>8493</b>	<b>7101</b>	<b>8953</b>	<b>7235</b>	<b>9026</b>	<b>8767</b>	<b>9168</b>

Time	Thursday 13/7/23	Friday 14/7/23	Saturday 15/7/23	Sunday 16/7/23	Monday 17/7/23	Tuesday 18/7/23	Wednesday 19/7/23	Ave	Min	Max	Total
6-7am	860	550	690	695	948	905	887	790.7	550	948	5535
7-8am	815	615	748	675	796	832	870	764.4	615	870	5351
8-9am	665	430	626	530	696	718	773	634.0	430	773	4438
9-10am	510	318	510	432	939	627	687	574.7	318	939	4023
10-11am	867	448	750	751	808	1034	873	790.1	448	1034	5531
11-12pm	895	478	555	753	739	823	803	720.9	478	895	5046
12-1pm	810	392	490	489	643	854	818	642.3	392	854	4496
1-2pm	656	600	750	604	728	738	698	682.0	600	750	4774
2-3pm	452	673	867	253	510	527	605	555.3	253	867	3887
3-4pm	589	480	845	488	582	467	640	584.4	467	845	4091
4-5pm	495	659	581	416	616	502	545	544.9	416	659	3814
5-6pm	570	651	860	623	585	525	603	631.0	525	860	4417
6-7pm	309	807	681	526	436	215	366	477.1	215	807	3340
<b>Total</b>	<b>8493</b>	<b>7101</b>	<b>8953</b>	<b>7235</b>	<b>9026</b>	<b>8767</b>	<b>9168</b>	<b>8391.9</b>	<b>5707</b>	<b>11101</b>	<b>58743</b>

6-7am	7-8am	8-9am	9-10am	10-11am	11-12pm	12-1pm	1-2pm	2-3pm	3-4pm	4-5pm	5-6pm	6-7pm	Min	Max
790.7	764.4	634.0	574.7	790.1	720.9	642.3	682.0	555.3	584.4	544.9	631.0	477.1	477.1	790.7



9-10am	207	316	67	37	627
10-11am	278	552	137	67	1034
11-12am	272	487	11	53	823
12am-1pm	256	428	112	58	854
1-2pm	268	387	75	8	738
2-3pm	240	250	25	12	527
3-4pm	200	185	69	13	467
4-5pm	220	189	90	3	502
5-6pm	216	198	103	8	525
6-7pm	25	140	39	11	215
<b>Total</b>	<b>2932</b>	<b>4433</b>	<b>995</b>	<b>407</b>	<b>8767</b>

NEW ROAD FROM INDORAMA TO TRALLER PARK (OUT) 19/7/2023					
Hours	Cat 1 (Motorcycle/keke)	Cat 2 (Car/light Vans)	Cat 3 (Lorries/Trucks)	Cat 4 (Buses/Coaches)	Total
6-7am	262	472	102	51	887
7-8am	262	478	77	53	870
8-9am	257	416	52	48	773
9-10am	218	407	44	18	687
10-11am	272	458	123	20	873
11-12am	247	418	121	17	803
12am-1pm	267	427	112	12	818
1-2pm	305	283	75	35	698
2-3pm	265	275	40	25	605
3-4pm	270	295	65	10	640
4-5pm	210	255	78	2	545
5-6pm	265	295	35	8	603
6-7pm	170	163	20	13	366
<b>Total</b>	<b>3270</b>	<b>4642</b>	<b>944</b>	<b>312</b>	<b>9168</b>

**NPA DUAL CARRIAGE WAY FIRST ROUNDABOUT BY ONNE HEALTH CENTER (IN) 13/7/2023**

Hours	Cat 1 (Motorcycle/keke)	Cat 2 (Car/light Vans)	Cat 3 (Lorries/Trucks)	Cat 4 (Buses/Coaches)	Total
6-7am	188	132	45	8	373
7-8am	204	131	9	4	348
8-9am	140	133	13	22	308
9-10am	132	109	11	7	259
10-11am	173	124	21	9	327
11-12am	103	172	17	17	309
12am-1pm	80	133	20	2	235
1-2pm	105	143	15	4	267
2-3pm	112	118	21	3	254
3-4pm	118	80	9	4	211
4-5pm	108	122	11	36	277
5-6pm	120	66	13	23	222
6-7pm	121	56	23	18	218
<b>Total</b>	<b>1704</b>	<b>1519</b>	<b>228</b>	<b>157</b>	<b>3608</b>

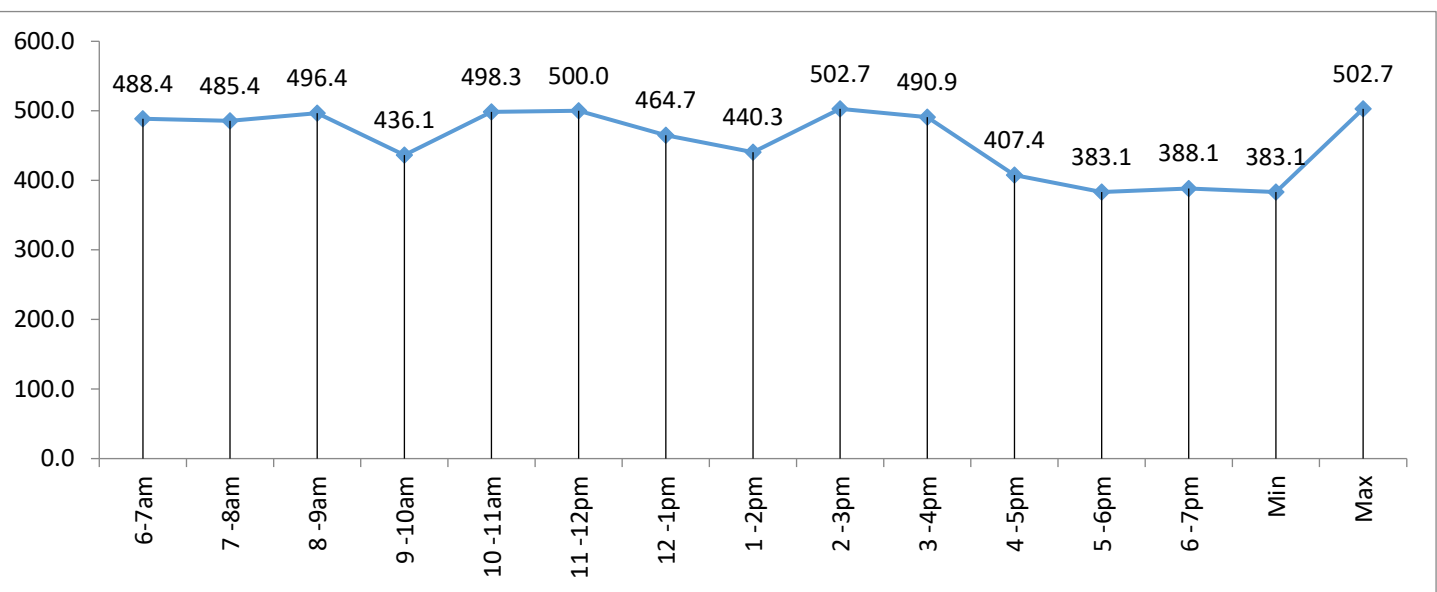
Category	Summary	Thursday 13/7/23	Friday 14/7/23	Saturday 15/7/23	Sunday 16/7/23	Monday 17/7/23	Tuesday 18/7/23	Wednesday 19/7/23
Cat 1 (Motorcycle/Keke)	1704	3260	3319	1020	1805	2385	3053	
Cat 2 (Car and Light Vans)	1519	1845	3142	1010	1740	1995	2451	
Cat 3 (Lorries and Trucks)	228	1473	2088	735	1026	1015	1302	
Cat 4 (Buses and Coaches)	157	478	803	230	565	600	926	
<b>Total</b>	<b>3608</b>	<b>7056</b>	<b>9352</b>	<b>2995</b>	<b>5136</b>	<b>5995</b>	<b>7732</b>	

**NPA DUAL CARRIAGE WAY FIRST ROUNDABOUT BY ONNE HEALTH CENTER (IN) 14/7/2023**

Hours	Cat 1 (Motorcycle/keke)	Cat 2 (Car/light Vans)	Cat 3 (Lorries/Trucks)	Cat 4 (Buses/Coaches)	Total
6-7am	330	110	20	8	468
7-8am	300	146	66	10	522
8-9am	300	119	69	10	498
9-10am	270	65	80	15	430
10-11am	330	165	100	20	615
11-12am	300	200	205	30	735
12am-1pm	300	150	150	0	600
1-2pm	220	100	110	55	485
2-3pm	175	150	150	50	525
3-4pm	300	190	185	10	685
4-5pm	120	195	135	95	545
5-6pm	145	110	80	55	390
6-7pm	170	145	123	120	558
<b>Total</b>	<b>3260</b>	<b>1845</b>	<b>1473</b>	<b>478</b>	<b>7056</b>

Time	Thursday 13/7/23	Friday 14/7/23	Saturday 15/7/23	Sunday 16/7/23	Monday 17/7/23	Tuesday 18/7/23	Wednesday 19/7/23	Ave	Min	Max	Total
6-7am	373	468	602	205	421	610	740	488.4	205	740	3419
7-8am	348	522	708	205	560	400	655	485.4	205	708	3398
8-9am	308	498	614	210	435	775	635	496.4	210	775	3475
9-10am	259	430	694	145	330	655	540	436.1	145	694	3053
10-11am	327	615	671	205	345	685	640	498.3	205	685	3488
11-12pm	309	735	671	175	380	630	600	500.0	175	735	3500
12-1pm	235	600	583	160	465	680	530	464.7	160	680	3253
1-2pm	267	485	845	260	240	260	725	440.3	240	845	3082
2-3pm	254	525	1425	330	250	195	540	502.7	195	1425	3519
3-4pm	211	685	985	200	350	255	750	490.9	200	985	3436
4-5pm	277	545	595	210	425	205	595	407.4	205	595	2852
5-6pm	222	390	525	385	390	390	380	383.1	222	525	2682
6-7pm	218	558	434	305	545	255	402	388.1	218	558	2717
<b>Total</b>	<b>3608</b>	<b>7056</b>	<b>9352</b>	<b>2995</b>	<b>5136</b>	<b>5995</b>	<b>7732</b>	<b>5982.0</b>	<b>2585</b>	<b>9950</b>	<b>41874</b>

6-7am	7-8am	8-9am	9-10am	10-11am	11-12pm	12-1pm	1-2pm	2-3pm	3-4pm	4-5pm	5-6pm	6-7pm	Min	Max
488.4	485.4	496.4	436.1	498.3	500.0	464.7	440.3	502.7	490.9	407.4	383.1	388.1	383.1	502.7



**NPA DUAL CARRIAGE WAY FIRST ROUNDABOUT BY ONNE HEALTH CENTER (IN) 15/7/2023**

Hours	Cat 1 (Motorcycle/keke)	Cat 2 (Car/light Vans)	Cat 3 (Lorries/Trucks)	Cat 4 (Buses/Coaches)	Total
6-7am	330	165	100	7	602
7-8am	300	250	150	8	708
8-9am	300	170	120	24	614
9-10am	270	225	180	19	694
10-11am	330	175	145	21	671
11-12am	300	200	150	21	671
12am-1pm	300	150	123	10	583
1-2pm	300	240	205	100	845
2-3pm	300	550	350	225	1425
3-4pm	210	430	225	120	985
4-5pm	135	240	115	105	595
5-6pm	123	213	121	68	525
6-7pm	121	134	104	75	434
<b>Total</b>	<b>3319</b>	<b>3142</b>	<b>2088</b>	<b>803</b>	<b>9352</b>

**NPA DUAL CARRIAGE WAY FIRST ROUNDABOUT BY ONNE HEALTH CENTER (IN) 16/7/2023**

Hours	Cat 1 (Motorcycle/keke)	Cat 2 (Car/light Vans)	Cat 3 (Lorries/Trucks)	Cat 4 (Buses/Coaches)	Total
6-7am	75	80	30	20	205
7-8am	55	85	40	25	205
8-9am	60	70	60	20	210
9-10am	45	35	55	10	145
10-11am	70	90	30	15	205
11-12am	50	65	35	25	175
12am-1pm	55	70	30	5	160
1-2pm	100	90	70	0	260
2-3pm	120	120	90	0	330
3-4pm	85	55	60	0	200
4-5pm	50	75	85	0	210
5-6pm	135	95	95	60	385
6-7pm	120	80	55	50	305
<b>Total</b>	<b>1020</b>	<b>1010</b>	<b>735</b>	<b>230</b>	<b>2995</b>

**NPA DUAL CARRIAGE WAY FIRST ROUNDABOUT BY ONNE HEALTH CENTER (IN) 17/7/2023**

Hours	Cat 1 (Motorcycle/keke)	Cat 2 (Car/light Vans)	Cat 3 (Lorries/Trucks)	Cat 4 (Buses/Coaches)	Total
6-7am	115	165	101	40	421
7-8am	180	200	125	55	560
8-9am	180	190	50	15	435
9-10am	165	105	45	15	330
10-11am	135	125	60	25	345
11-12am	145	135	70	30	380
12am-1pm	150	180	110	25	465
1-2pm	80	60	65	35	240
2-3pm	80	80	45	45	250
3-4pm	105	110	55	80	350
4-5pm	140	105	110	70	425
5-6pm	105	120	80	85	390
6-7pm	225	165	110	45	545
<b>Total</b>	<b>1805</b>	<b>1740</b>	<b>1026</b>	<b>565</b>	<b>5136</b>

**NPA DUAL CARRIAGE WAY FIRST ROUNDABOUT BY ONNE HEALTH CENTER (IN) 18/7/2023**

Hours	Cat 1 (Motorcycle/keke)	Cat 2 (Car/light Vans)	Cat 3 (Lorries/Trucks)	Cat 4 (Buses/Coaches)	Total
6-7am	330	130	85	65	610
7-8am	155	115	65	65	400
8-9am	300	300	150	25	775

9-10am	270	270	95	20	655
10-11am	330	220	95	40	685
11-12am	250	250	100	30	630
12am-1pm	300	255	90	35	680
1-2pm	110	70	50	30	260
2-3pm	35	65	45	50	195
3-4pm	70	70	75	40	255
4-5pm	35	65	35	70	205
5-6pm	120	145	70	55	390
6-7pm	80	40	60	75	255
<b>Total</b>	<b>2385</b>	<b>1995</b>	<b>1015</b>	<b>600</b>	<b>5995</b>

NPA DUAL CARRIAGE WAY FIRST ROUNDABOUT BY ONNE HEALTH CENTER (IN) 19/7/2023					
Hours	Cat 1 (Motorcycle/keke)	Cat 2 (Car/light Vans)	Cat 3 (Lorries/Trucks)	Cat 4 (Buses/Coaches)	Total
6-7am	330	220	115	75	740
7-8am	300	155	100	100	655
8-9am	300	165	85	85	635
9-10am	270	170	70	30	540
10-11am	330	195	75	40	640
11-12am	300	150	80	70	600
12am-1pm	300	100	65	65	530
1-2pm	185	295	150	95	725
2-3pm	125	185	100	130	540
3-4pm	190	305	190	65	750
4-5pm	165	245	145	40	595
5-6pm	130	130	60	60	380
6-7pm	128	136	67	71	402
<b>Total</b>	<b>3053</b>	<b>2451</b>	<b>1302</b>	<b>926</b>	<b>7732</b>

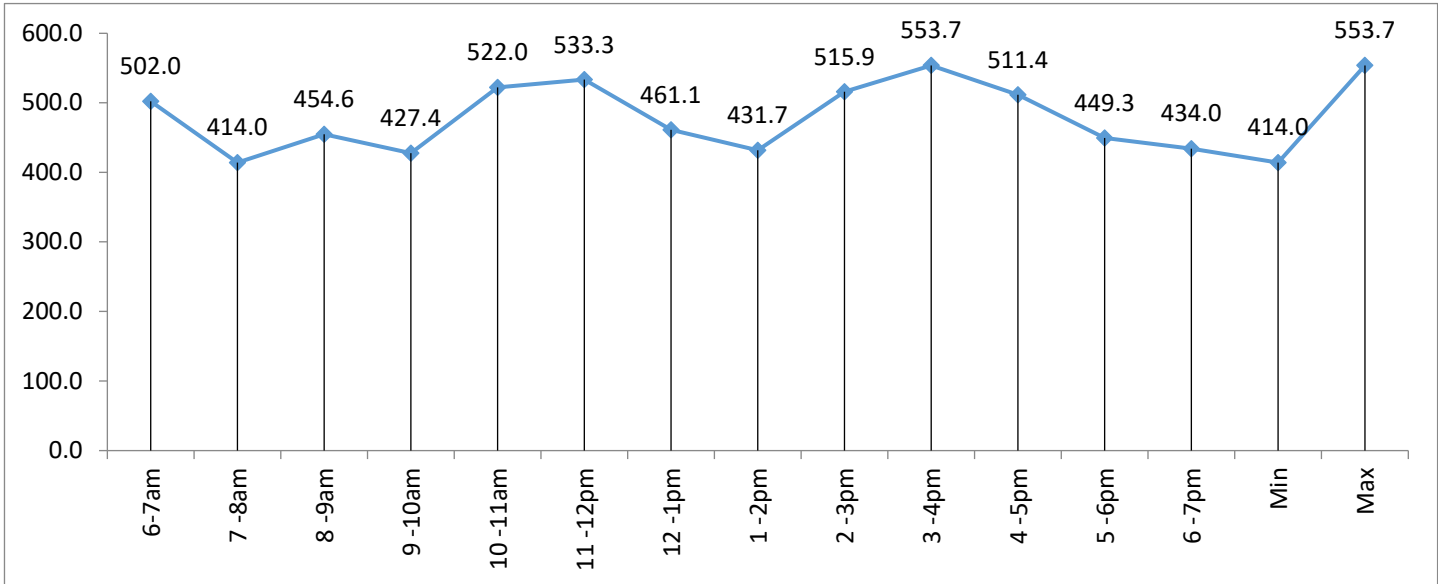
NPA DUAL CARRIAGE WAY FIRST ROUNDABOUT BY ONNE HEALTH CENTER (OUT) 13/7/2023					
Hours	Cat 1 (Motorcycle/keke)	Cat 2 (Car/light Vans)	Cat 3 (Lorries/Trucks)	Cat 4 (Buses/Coaches)	Total
6-7am	184	131	20	13	348
7-8am	173	67	24	2	266
8-9am	158	152	8	1	319
9-10am	183	128	15	11	337
10-11am	173	169	16	16	374
11-12am	178	168	18	3	367
12am-1pm	163	157	2	11	333
1-2pm	173	153	8	8	342
2-3pm	188	168	22	3	381
3-4pm	193	158	8	2	361
4-5pm	173	133	13	31	350
5-6pm	118	120	16	17	271
6-7pm	102	121	12	14	249
<b>Total</b>	<b>2159</b>	<b>1825</b>	<b>182</b>	<b>132</b>	<b>4298</b>

Category	Thursday 13/7/23	Friday 14/7/23	Saturday 15/7/23	Sunday 16/7/23	Monday 17/7/23	Tuesday 18/7/23	Wednesday 19/7/23
Cat 1 (Motorcycle/Keke)	2159	3500	3638	1261	1570	2325	3055
Cat 2 (Car and Light Vans)	1825	2386	3273	819	1485	1730	2020
Cat 3 (Lorries and Trucks)	182	1617	2285	678	895	950	1340
Cat 4 (Buses and Coaches)	132	1093	1017	452	501	540	745
<b>Total</b>	<b>4298</b>	<b>8596</b>	<b>10213</b>	<b>3210</b>	<b>4451</b>	<b>5545</b>	<b>7160</b>

NPA DUAL CARRIAGE WAY FIRST ROUNDABOUT BY ONNE HEALTH CENTER (OUT) 14/7/2023					
Hours	Cat 1 (Motorcycle/keke)	Cat 2 (Car/light Vans)	Cat 3 (Lorries/Trucks)	Cat 4 (Buses/Coaches)	Total
6-7am	330	162	96	6	594
7-8am	300	133	39	12	484
8-9am	300	171	47	5	523
9-10am	270	105	65	10	450
10-11am	330	95	115	30	570
11-12am	300	200	200	20	720
12am-1pm	300	205	145	0	650
1-2pm	200	110	110	110	530
2-3pm	275	250	200	140	865
3-4pm	300	220	160	200	880
4-5pm	225	270	180	135	810
5-6pm	220	165	110	220	715
6-7pm	150	300	150	205	805
<b>Total</b>	<b>3500</b>	<b>2386</b>	<b>1617</b>	<b>1093</b>	<b>8596</b>

Time	Thursday 13/7/23	Friday 14/7/23	Saturday 15/7/23	Sunday 16/7/23	Monday 17/7/23	Tuesday 18/7/23	Wednesday 19/7/23	Ave	Min	Max	Total
6-7am	348	594	577	175	480	635	705	502.0	175	705	3514
7-8am	266	484	642	136	335	405	630	414.0	136	642	2898
8-9am	319	523	625	140	385	560	630	454.6	140	630	3182
9-10am	337	450	602	203	365	540	495	427.4	203	602	2992
10-11am	374	570	655	310	450	680	615	522.0	310	680	3654
11-12pm	367	720	656	255	420	695	620	533.3	255	720	3733
12-1pm	333	650	479	255	346	620	545	461.1	255	650	3228
1-2pm	342	530	935	275	175	245	520	431.7	175	935	3022
2-3pm	381	865	1360	305	180	170	350	515.9	170	1360	3611
3-4pm	361	880	1270	370	250	235	510	553.7	235	1270	3876
4-5pm	350	810	975	250	375	210	610	511.4	210	975	3580
5-6pm	271	715	710	264	360	350	475	449.3	264	715	3145
6-7pm	249	805	727	272	330	200	455	434.0	200	805	3038
<b>Total</b>	<b>4298</b>	<b>8596</b>	<b>10213</b>	<b>3210</b>	<b>4451</b>	<b>5545</b>	<b>7160</b>	<b>6210.4</b>	<b>2728</b>	<b>10689</b>	<b>43473</b>

6-7am	7-8am	8-9am	9-10am	10-11am	11-12pm	12-1pm	1-2pm	2-3pm	3-4pm	4-5pm	5-6pm	6-7pm	Min	Max
502.0	414.0	454.6	427.4	522.0	533.3	461.1	431.7	515.9	553.7	511.4	449.3	434.0	414.0	553.7



NPA DUAL CARRIAGE WAY FIRST ROUNDABOUT BY ONNE HEALTH CENTER (OUT) 15/7/2023					
Hours	Cat 1 (Motorcycle/keke)	Cat 2 (Car/light Vans)	Cat 3 (Lorries/Trucks)	Cat 4 (Buses/Coaches)	Total
6-7am	330	145	65	37	577
7-8am	300	200	125	17	642
8-9am	300	150	157	18	625
9-10am	270	185	135	12	602
10-11am	330	150	130	45	655
11-12am	300	200	130	26	656
12am-1pm	300	70	100	9	479
1-2pm	275	220	330	110	935
2-3pm	265	600	345	150	1360
3-4pm	300	600	220	150	1270
4-5pm	225	360	180	210	975
5-6pm	230	178	156	146	710
6-7pm	213	215	212	87	727
<b>Total</b>	<b>3638</b>	<b>3273</b>	<b>2285</b>	<b>1017</b>	<b>10213</b>

NPA DUAL CARRIAGE WAY FIRST ROUNDABOUT BY ONNE HEALTH CENTER (OUT) 16/7/2023					
Hours	Cat 1 (Motorcycle/keke)	Cat 2 (Car/light Vans)	Cat 3 (Lorries/Trucks)	Cat 4 (Buses/Coaches)	Total
6-7am	55	70	40	10	175
7-8am	65	20	45	6	136
8-9am	50	65	20	5	140
9-10am	70	70	50	13	203
10-11am	100	75	80	55	310
11-12am	125	55	55	20	255
12am-1pm	115	65	60	15	255
1-2pm	120	55	30	70	275
2-3pm	85	110	55	55	305
3-4pm	200	50	70	50	370
4-5pm	70	70	60	50	250
5-6pm	100	50	62	52	264
6-7pm	106	64	51	51	272
<b>Total</b>	<b>1261</b>	<b>819</b>	<b>678</b>	<b>452</b>	<b>3210</b>

NPA DUAL CARRIAGE WAY FIRST ROUNDABOUT BY ONNE HEALTH CENTER (OUT) 17/7/2023					
Hours	Cat 1 (Motorcycle/keke)	Cat 2 (Car/light Vans)	Cat 3 (Lorries/Trucks)	Cat 4 (Buses/Coaches)	Total
6-7am	135	185	110	50	480
7-8am	115	110	55	55	335
8-9am	200	115	50	20	385
9-10am	160	125	65	15	365
10-11am	180	165	90	15	450
11-12am	180	145	70	25	420
12am-1pm	90	145	90	21	346
1-2pm	55	50	25	45	175
2-3pm	35	65	40	40	180
3-4pm	90	60	65	35	250
4-5pm	130	105	70	70	375
5-6pm	90	110	95	65	360
6-7pm	110	105	70	45	330
<b>Total</b>	<b>1570</b>	<b>1485</b>	<b>895</b>	<b>501</b>	<b>4451</b>

NPA DUAL CARRIAGE WAY FIRST ROUNDABOUT BY ONNE HEALTH CENTER (OUT) 18/7/2023					
Hours	Cat 1 (Motorcycle/keke)	Cat 2 (Car/light Vans)	Cat 3 (Lorries/Trucks)	Cat 4 (Buses/Coaches)	Total
6-7am	220	220	130	65	635
7-8am	155	150	50	50	405
8-9am	300	105	135	20	560

9-10am	225	225	70	20	540
10-11am	330	220	105	25	680
11-12am	300	250	115	30	695
12am-1pm	300	235	60	25	620
1-2pm	105	50	50	40	245
2-3pm	50	45	40	35	170
3-4pm	70	35	65	65	235
4-5pm	70	70	35	35	210
5-6pm	115	85	60	90	350
6-7pm	85	40	35	40	200
<b>Total</b>	<b>2325</b>	<b>1730</b>	<b>950</b>	<b>540</b>	<b>5545</b>

NPA DUAL CARRIAGE WAY FIRST ROUNDABOUT BY ONNE HEALTH CENTER (OUT) 19/7/2023					
Hours	Cat 1 (Motorcycle/keke)	Cat 2 (Car/light Vans)	Cat 3 (Lorries/Trucks)	Cat 4 (Buses/Coaches)	Total
6-7am	330	195	120	60	705
7-8am	300	165	115	50	630
8-9am	300	205	80	45	630
9-10am	270	115	85	25	495
10-11am	330	170	75	40	615
11-12am	300	170	100	50	620
12am-1pm	300	140	80	25	545
1-2pm	160	195	100	65	520
2-3pm	120	65	85	80	350
3-4pm	145	125	160	80	510
4-5pm	170	210	140	90	610
5-6pm	135	170	90	80	475
6-7pm	195	95	110	55	455
<b>Total</b>	<b>3055</b>	<b>2020</b>	<b>1340</b>	<b>745</b>	<b>7160</b>



NPA DUAL CARRIAGE WAY SECOND ROUNDABOUT BY NAFCON JUNCTION (IN) 13/7/2023					
Hours	Cat 1 (Motorcycle/keke)	Cat 2 (Car/light Vans)	Cat 3 (Lorries/Trucks)	Cat 4 (Buses/Coaches)	Total
6-7am	178	102	23	30	333
7-8am	300	291	50	20	661
8-9am	300	335	131	86	852
9-10am	270	305	85	28	688
10-11am	330	341	115	60	846
11-12am	300	310	66	54	730
12am-1pm	300	210	165	50	725
1-2pm	73	62	54	22	211
2-3pm	67	95	43	55	260
3-4pm	72	73	36	90	271
4-5pm	67	61	65	12	205
5-6pm	163	238	98	19	518
6-7pm	74	110	110	54	348
<b>Total</b>	<b>2494</b>	<b>2533</b>	<b>1041</b>	<b>580</b>	<b>6648</b>

NPA DUAL CARRIAGE WAY SECOND ROUNDABOUT BY NAFCON JUNCTION (IN) 14/7/2023					
Hours	Cat 1 (Motorcycle/keke)	Cat 2 (Car/light Vans)	Cat 3 (Lorries/Trucks)	Cat 4 (Buses/Coaches)	Total
6-7am	330	271	94	81	776
7-8am	300	327	69	23	719
8-9am	300	431	220	15	966
9-10am	270	237	101	51	659
10-11am	330	164	85	10	589
11-12am	250	350	200	3	803
12am-1pm	204	162	123	2	491
1-2pm	317	28	108	1	454
2-3pm	54	70	38	2	164
3-4pm	56	28	48	12	144
4-5pm	145	33	50	9	237
5-6pm	201	49	195	5	450
6-7pm	72	42	36	0	150
<b>Total</b>	<b>2829</b>	<b>2192</b>	<b>1367</b>	<b>214</b>	<b>6602</b>

NPA DUAL CARRIAGE WAY SECOND ROUNDABOUT BY NAFCON JUNCTION (IN) 15/7/2023					
Hours	Cat 1 (Motorcycle/keke)	Cat 2 (Car/light Vans)	Cat 3 (Lorries/Trucks)	Cat 4 (Buses/Coaches)	Total
6-7am	186	290	18	14	508
7-8am	123	60	75	5	263
8-9am	133	136	30	3	302
9-10am	61	46	30	8	145
10-11am	177	255	135	10	577
11-12am	140	130	26	8	304
12am-1pm	229	230	79	5	543
1-2pm	170	33	33	1	237
2-3pm	96	38	56	4	194
3-4pm	211	143	159	23	536
4-5pm	65	300	25	2	392
5-6pm	163	117	27	5	312
6-7pm	210	51	35	2	298
<b>Total</b>	<b>1964</b>	<b>1829</b>	<b>728</b>	<b>90</b>	<b>4611</b>

NPA DUAL CARRIAGE WAY SECOND ROUNDABOUT BY NAFCON JUNCTION (IN) 16/7/2023					
Hours	Cat 1 (Motorcycle/keke)	Cat 2 (Car/light Vans)	Cat 3 (Lorries/Trucks)	Cat 4 (Buses/Coaches)	Total
6-7am	165	165	35	25	390
7-8am	193	134	12	7	346
8-9am	180	178	14	2	374
9-10am	41	32	31	2	106
10-11am	139	83	26	2	250
11-12am	176	182	25	1	384
12am-1pm	139	175	95	0	409
1-2pm	132	85	25	2	244
2-3pm	115	36	27	0	178
3-4pm	105	60	113	14	292
4-5pm	123	115	102	23	363
5-6pm	86	65	137	27	315
6-7pm	75	46	102	31	254
<b>Total</b>	<b>1669</b>	<b>1356</b>	<b>744</b>	<b>136</b>	<b>3905</b>

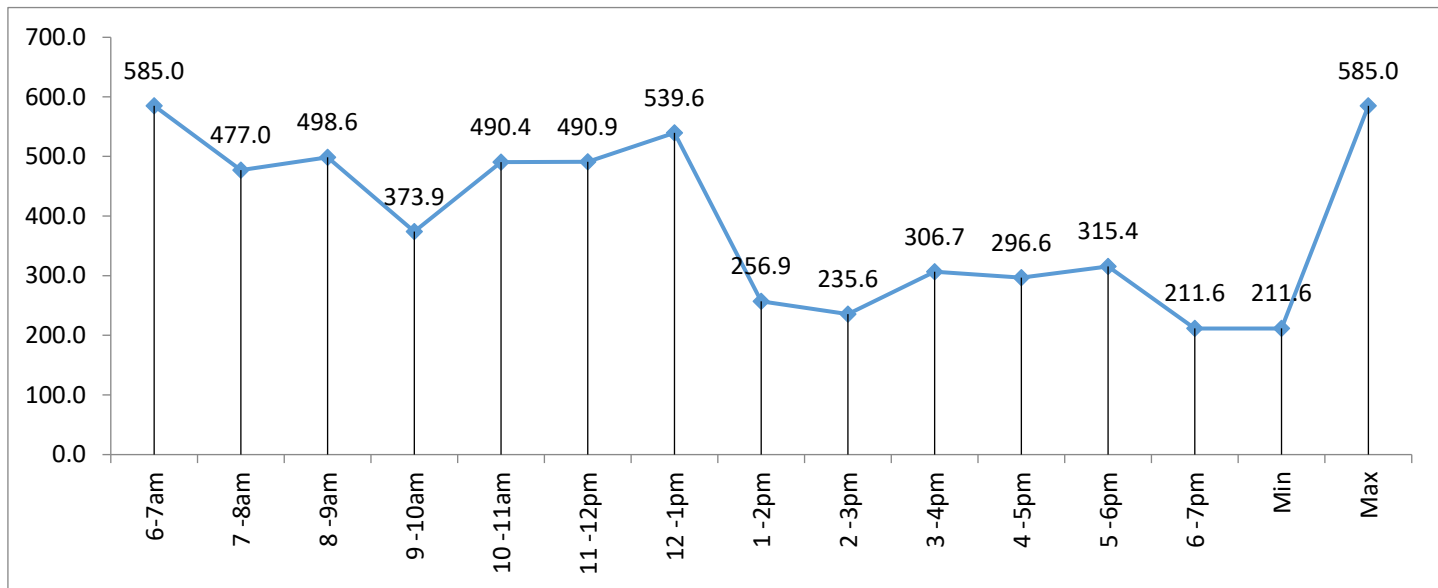
NPA DUAL CARRIAGE WAY SECOND ROUNDABOUT BY NAFCON JUNCTION (IN) 17/7/2023					
Hours	Cat 1 (Motorcycle/keke)	Cat 2 (Car/light Vans)	Cat 3 (Lorries/Trucks)	Cat 4 (Buses/Coaches)	Total
6-7am	220	275	120	101	716
7-8am	173	208	72	28	481
8-9am	173	96	28	1	298
9-10am	210	135	50	1	396
10-11am	257	11	46	1	315
11-12am	290	79	41	1	411
12am-1pm	300	338	43	0	681
1-2pm	137	52	47	4	240
2-3pm	117	25	24	9	175
3-4pm	71	217	52	4	344
4-5pm	113	62	41	6	222
5-6pm	135	72	47	4	258
6-7pm	89	56	34	2	181
<b>Total</b>	<b>2285</b>	<b>1626</b>	<b>645</b>	<b>162</b>	<b>4718</b>

NPA DUAL CARRIAGE WAY SECOND ROUNDABOUT BY NAFCON JUNCTION (IN) 18/7/2023					
Hours	Cat 1 (Motorcycle/keke)	Cat 2 (Car/light Vans)	Cat 3 (Lorries/Trucks)	Cat 4 (Buses/Coaches)	Total
6-7am	330	230	101	60	721
7-8am	146	227	50	31	454
8-9am	156	138	42	0	336

	Summary	Thursday 13/7/23	Friday 14/7/23	Saturday 15/7/23	Sunday 16/7/23	Monday 17/7/23	Tuesday 18/7/23	Wednesday 19/7/23
Cat 1 (Motorcycle/Keke)	2494	2829	1964	1669	2285	2075	1875	361
Cat 2 (Car and Light Vans)	2533	2192	1829	1356	1626	1763	1280	361
Cat 3 (Lorries and Trucks)	1041	1367	728	744	645	1079	728	361
Cat 4 (Buses and Coaches)	580	214	90	136	162	128	134	361
<b>Total</b>	<b>6648</b>	<b>6602</b>	<b>4611</b>	<b>3905</b>	<b>4718</b>	<b>5045</b>	<b>4017</b>	<b>361</b>

Time	Thursday 13/7/23	Friday 14/7/23	Saturday 15/7/23	Sunday 16/7/23	Monday 17/7/23	Tuesday 18/7/23	Wednesday 19/7/23	Ave	Min	Max	Total
6-7am	333	776	508	390	716	721	651	585.0	333	776	4095
7-8am	661	719	263	346	481	454	415	477.0	263	719	3339
8-9am	852	966	302	374	298	336	362	498.6	298	966	3490
9-10am	688	659	145	106	396	291	332	373.9	106	688	2617
10-11am	846	589	577	250	315	639	217	490.4	217	846	3433
11-12pm	730	803	304	384	411	318	486	490.9	304	803	3436
12-1pm	725	491	543	409	681	383	545	539.6	383	725	3777
1-2pm	211	454	237	244	240	194	218	256.9	194	454	1798
2-3pm	260	164	194	178	175	527	151	235.6	151	527	1649
3-4pm	271	144	536	292	344	392	168	306.7	144	536	2147
4-5pm	205	237	392	363	222	479	178	296.6	178	479	2076
5-6pm	518	450	312	315	258	182	173	315.4	173	518	2208
6-7pm	348	150	298	254	181	129	121	211.6	121	348	1481
<b>Total</b>	<b>6648</b>	<b>6602</b>	<b>4611</b>	<b>3905</b>	<b>4718</b>	<b>5045</b>	<b>4017</b>	<b>5078.0</b>	<b>2865</b>	<b>8385</b>	<b>35546</b>

6-7am	7-8am	8-9am	9-10am	10-11am	11-12pm	12-1pm	1-2pm	2-3pm	3-4pm	4-5pm	5-6pm	6-7pm	Min	Max
585.0	477.0	498.6	373.9	490.4	490.9	539.6	256.9	235.6	306.7	296.6	315.4	211.6	211.6	585.0



9-10am	129	126	35	1	291
10-11am	330	236	58	15	639
11-12am	155	107	55	1	318
12am-1pm	183	144	54	2	383
1-2pm	130	28	34	2	194
2-3pm	112	175	240	0	527
3-4pm	145	107	131	9	392
4-5pm	120	156	200	3	479
5-6pm	74	54	51	3	182
6-7pm	65	35	28	1	129
<b>Total</b>	<b>2075</b>	<b>1763</b>	<b>1079</b>	<b>128</b>	<b>5045</b>

NPA DUAL CARRIAGE WAY SECOND ROUNDABOUT BY NAFCON JUNCTION (IN) 19/7/2023					
Hours	Cat 1 (Motorcycle/keke)	Cat 2 (Car/light Vans)	Cat 3 (Lorries/Trucks)	Cat 4 (Buses/Coaches)	Total
6-7am	293	159	119	80	651
7-8am	162	151	70	32	415
8-9am	204	124	32	2	362
9-10am	183	102	45	2	332
10-11am	124	70	23	0	217
11-12am	220	212	54	0	486
12am-1pm	250	195	100	0	545
1-2pm	100	48	69	1	218
2-3pm	71	35	45	0	151
3-4pm	74	29	56	9	168
4-5pm	80	54	38	6	178
5-6pm	60	63	48	2	173
6-7pm	54	38	29	0	121
<b>Total</b>	<b>1875</b>	<b>1280</b>	<b>728</b>	<b>134</b>	<b>4017</b>

NPA DUAL CARRIAGE WAY SECOND ROUNDABOUT BY NAFCON JUNCTION (OUT) 13/7/2023					
Hours	Cat 1 (Motorcycle/keke)	Cat 2 (Car/light Vans)	Cat 3 (Lorries/Trucks)	Cat 4 (Buses/Coaches)	Total
6-7am	330	183	46	10	569
7-8am	300	145	28	17	490
8-9am	300	141	16	43	500
9-10am	270	169	40	26	505
10-11am	330	148	61	2	541
11-12am	300	159	50	1	510
12am-1pm	300	145	72	5	522
1-2pm	270	136	65	13	484
2-3pm	330	268	112	10	720
3-4pm	300	107	42	28	477
4-5pm	300	205	115	65	685
5-6pm	270	106	51	36	463
6-7pm	256	89	45	42	432
<b>Total</b>	<b>3856</b>	<b>2001</b>	<b>743</b>	<b>298</b>	<b>6898</b>

NPA DUAL CARRIAGE WAY SECOND ROUNDABOUT BY NAFCON JUNCTION (OUT) 14/7/2023					
Hours	Cat 1 (Motorcycle/keke)	Cat 2 (Car/light Vans)	Cat 3 (Lorries/Trucks)	Cat 4 (Buses/Coaches)	Total
6-7am	222	97	12	12	343
7-8am	258	27	39	52	376
8-9am	300	103	23	13	439
9-10am	270	74	30	12	386
10-11am	330	113	138	3	584
11-12am	300	153	88	17	558
12am-1pm	300	176	64	8	548
1-2pm	270	196	70	3	539
2-3pm	330	198	50	8	586
3-4pm	300	238	57	21	616
4-5pm	300	263	92	1	656
5-6pm	270	247	44	15	576
6-7pm	302	238	56	12	608
<b>Total</b>	<b>3752</b>	<b>2123</b>	<b>763</b>	<b>177</b>	<b>6815</b>

NPA DUAL CARRIAGE WAY SECOND ROUNDABOUT BY NAFCON JUNCTION (OUT) 15/7/2023					
Hours	Cat 1 (Motorcycle/keke)	Cat 2 (Car/light Vans)	Cat 3 (Lorries/Trucks)	Cat 4 (Buses/Coaches)	Total
6-7am	330	120	54	3	507
7-8am	300	166	33	22	521
8-9am	300	175	49	3	527
9-10am	270	183	57	1	511
10-11am	330	211	53	0	594
11-12am	300	185	66	1	552
12am-1pm	300	323	49	0	672
1-2pm	270	173	101	0	544
2-3pm	330	113	68	8	519
3-4pm	300	88	50	24	462
4-5pm	300	113	67	38	518
5-6pm	270	135	20	43	468
6-7pm	250	102	28	29	409
<b>Total</b>	<b>3850</b>	<b>2087</b>	<b>695</b>	<b>172</b>	<b>6804</b>

NPA DUAL CARRIAGE WAY SECOND ROUNDABOUT BY NAFCON JUNCTION (OUT) 16/7/2023					
Hours	Cat 1 (Motorcycle/keke)	Cat 2 (Car/light Vans)	Cat 3 (Lorries/Trucks)	Cat 4 (Buses/Coaches)	Total
6-7am	330	118	10	5	463
7-8am	300	135	18	22	475
8-9am	300	142	17	2	461
9-10am	270	123	16	1	410
10-11am	330	178	11	0	519
11-12am	300	174	9	7	490
12am-1pm	300	82	11	1	394
1-2pm	270	94	18	2	384
2-3pm	330	130	39	3	502
3-4pm	300	104	18	1	423
4-5pm	300	108	23	17	448
5-6pm	265	73	73	18	429
6-7pm	240	89	18	8	355
<b>Total</b>	<b>3835</b>	<b>1550</b>	<b>281</b>	<b>87</b>	<b>5753</b>

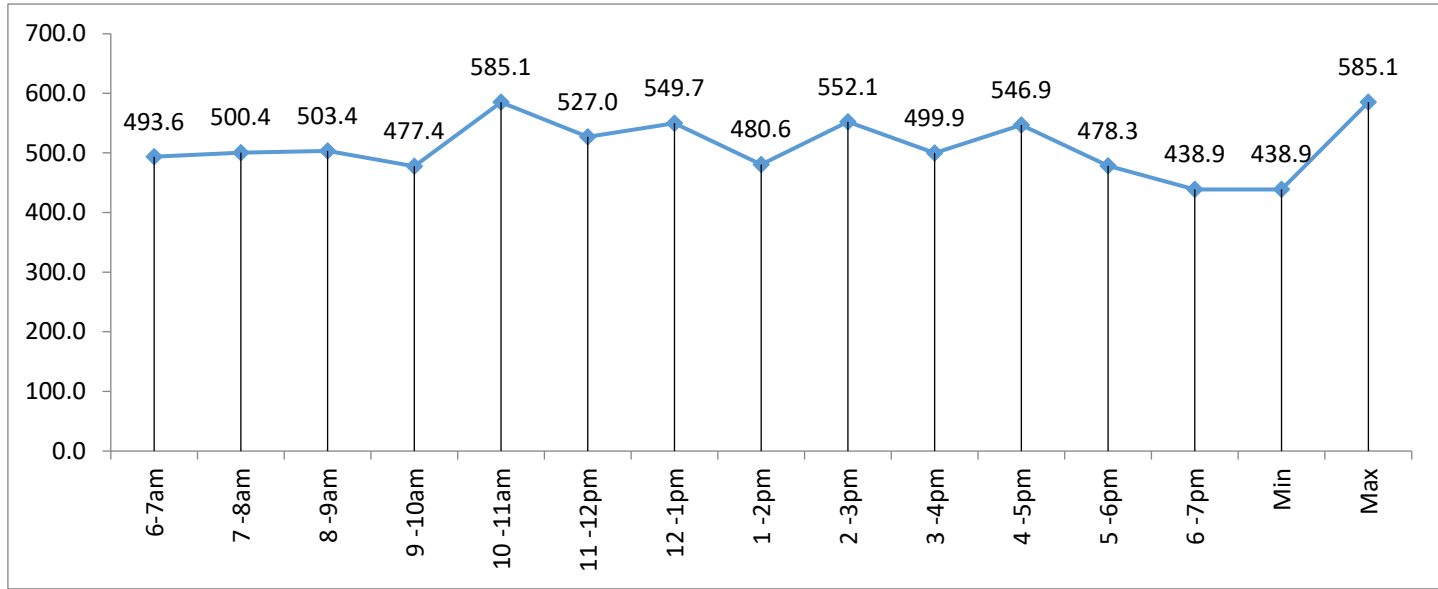
NPA DUAL CARRIAGE WAY SECOND ROUNDABOUT BY NAFCON JUNCTION (OUT) 17/7/2023					
Hours	Cat 1 (Motorcycle/keke)	Cat 2 (Car/light Vans)	Cat 3 (Lorries/Trucks)	Cat 4 (Buses/Coaches)	Total
6-7am	330	213	6	1	550
7-8am	300	226	6	21	553
8-9am	300	224	22	5	551
9-10am	270	232	30	0	532
10-11am	330	202	36	3	571
11-12am	300	203	30	3	536
12am-1pm	300	197	44	1	542
1-2pm	270	155	34	2	461
2-3pm	330	58	44	8	440
3-4pm	300	84	34	23	441
4-5pm	300	98	44	34	476
5-6pm	270	121	54	19	464
6-7pm	220	112	67	21	420
<b>Total</b>	<b>3820</b>	<b>2125</b>	<b>451</b>	<b>141</b>	<b>6537</b>

NPA DUAL CARRIAGE WAY SECOND ROUNDABOUT BY NAFCON JUNCTION (OUT) 18/7/2023					
Hours	Cat 1 (Motorcycle/keke)	Cat 2 (Car/light Vans)	Cat 3 (Lorries/Trucks)	Cat 4 (Buses/Coaches)	Total
6-7am	236	213	13	2	464
7-8am	300	205	18	25	548
8-9am	300	197	20	4	521

Category	Summary	Thursday 13/7/23	Friday 14/7/23	Saturday 15/7/23	Sunday 16/7/23	Monday 17/7/23	Tuesday 18/7/23	Wednesday 19/7/23
Cat 1 (Motorcycle/Keke)		3856	3752	3850	3835	3820	3741	3846
Cat 2 (Car and Light Vans)		2001	2123	2087	1550	2125	2053	2367
Cat 3 (Lorries and Trucks)		743	763	695	281	451	619	665
Cat 4 (Buses and Coaches)		298	177	172	87	141	167	168
<b>Total</b>		<b>6898</b>	<b>6815</b>	<b>6804</b>	<b>5753</b>	<b>6537</b>	<b>6580</b>	<b>7046</b>

Time	Thursday 13/7/23	Friday 14/7/23	Saturday 15/7/23	Sunday 16/7/23	Monday 17/7/23	Tuesday 18/7/23	Wednesday 19/7/23	Ave	Min	Max	Total
6-7am	569	343	507	463	550	464	559	493.6	343	569	3455
7-8am	490	376	521	475	553	548	540	500.4	376	553	3503
8-9am	500	439	527	461	551	521	525	503.4	439	551	3524
9-10am	505	386	511	410	532	491	507	477.4	386	532	3342
10-11am	541	584	594	519	571	634	653	585.1	519	653	4096
11-12pm	510	558	552	490	536	452	591	527.0	452	591	3689
12-1pm	522	548	672	394	542	593	577	549.7	394	672	3848
1-2pm	484	539	544	384	461	463	489	480.6	384	544	3364
2-3pm	720	586	519	502	440	506	592	552.1	440	720	3865
3-4pm	477	616	462	423	441	510	570	499.9	423	616	3499
4-5pm	685	656	518	448	476	506	539	546.9	448	685	3828
5-6pm	463	576	468	429	464	475	473	478.3	429	576	3348
6-7pm	432	608	409	355	420	417	431	438.9	355	608	3072
<b>Total</b>	<b>6898</b>	<b>6815</b>	<b>6804</b>	<b>5753</b>	<b>6537</b>	<b>6580</b>	<b>7046</b>	<b>6633.3</b>	<b>5388</b>	<b>7870</b>	<b>46433</b>

6-7am	7-8am	8-9am	9-10am	10-11am	11-12pm	12-1pm	1-2pm	2-3pm	3-4pm	4-5pm	5-6pm	6-7pm	Min	Max
493.6	500.4	503.4	477.4	585.1	527.0	549.7	480.6	552.1	499.9	546.9	478.3	438.9	438.9	585.1



9-10am	270	181	39	1	491
10-11am	330	255	48	1	634
11-12am	300	98	52	2	452
12am-1pm	300	234	56	3	593
1-2pm	270	124	62	7	463
2-3pm	330	114	49	13	506
3-4pm	300	129	48	33	510
4-5pm	300	103	58	45	506
5-6pm	270	102	84	19	475
6-7pm	235	98	72	12	417
<b>Total</b>	<b>3741</b>	<b>2053</b>	<b>619</b>	<b>167</b>	<b>6580</b>

NPA DUAL CARRIAGE WAY SECOND ROUNDABOUT BY NAFCON JUNCTION (OUT) 19/7/2023					
Hours	Cat 1 (Motorcycle/keke)	Cat 2 (Car/light Vans)	Cat 3 (Lorries/Trucks)	Cat 4 (Buses/Coaches)	Total
6-7am	330	208	18	3	559
7-8am	300	185	32	23	540
8-9am	300	202	19	4	525
9-10am	270	191	45	1	507
10-11am	330	258	61	4	653
11-12am	300	230	58	3	591
12am-1pm	300	221	54	2	577
1-2pm	270	158	58	3	489
2-3pm	330	152	98	12	592
3-4pm	300	153	83	34	570
4-5pm	300	130	72	37	539
5-6pm	270	143	38	22	473
6-7pm	246	136	29	20	431
<b>Total</b>	<b>3846</b>	<b>2367</b>	<b>665</b>	<b>168</b>	<b>7046</b>

NPA MAIN ENTRANCE (IN) 13/7/2023					
Hours	Cat 1 (Motorcycle/keke)	Cat 2 (Car/light Vans)	Cat 3 (Lorries/Trucks)	Cat 4 (Buses/Coaches)	Total
6-7am	8	124	13	18	163
7-8am	20	296	23	30	369
8-9am	10	219	18	7	254
9-10am	1	207	30	2	240
10-11am	7	198	50	16	271
11-12am	0	187	45	14	246
12am-1pm	0	113	34	1	148
1-2pm	13	125	82	11	231
2-3pm	12	149	35	0	196
3-4pm	8	135	58	24	225
4-5pm	12	55	55	4	126
5-6pm	40	150	55	16	261
6-7pm	14	69	42	6	131
<b>Total</b>	<b>145</b>	<b>2027</b>	<b>540</b>	<b>149</b>	<b>2861</b>

NPA MAIN ENTRANCE (IN) 14/7/2023					
Hours	Cat 1 (Motorcycle/keke)	Cat 2 (Car/light Vans)	Cat 3 (Lorries/Trucks)	Cat 4 (Buses/Coaches)	Total
6-7am	16	200	22	51	289
7-8am	9	226	35	21	291
8-9am	1	182	41	3	227
9-10am	5	168	39	2	214
10-11am	8	240	45	10	303
11-12am	5	290	165	30	490
12am-1pm	1	185	45	2	233
1-2pm	15	177	81	3	276
2-3pm	12	159	55	5	231
3-4pm	22	156	60	14	252
4-5pm	40	120	55	13	228
5-6pm	8	66	56	8	138
6-7pm	20	140	79	4	243
<b>Total</b>	<b>162</b>	<b>2309</b>	<b>778</b>	<b>166</b>	<b>3415</b>

NPA MAIN ENTRANCE (IN) 15/7/2023					
Hours	Cat 1 (Motorcycle/keke)	Cat 2 (Car/light Vans)	Cat 3 (Lorries/Trucks)	Cat 4 (Buses/Coaches)	Total
6-7am	15	128	30	30	203
7-8am	14	114	40	5	173
8-9am	10	83	22	4	119
9-10am	7	64	41	2	114
10-11am	7	99	45	4	155
11-12am	9	173	120	8	310
12am-1pm	1	127	108	7	243
1-2pm	12	89	63	2	166
2-3pm	7	66	56	19	148
3-4pm	4	57	25	19	105
4-5pm	24	59	30	22	135
5-6pm	19	50	20	18	107
6-7pm	13	34	11	3	61
<b>Total</b>	<b>142</b>	<b>1143</b>	<b>611</b>	<b>143</b>	<b>2039</b>

NPA MAIN ENTRANCE (IN) 16/7/2023					
Hours	Cat 1 (Motorcycle/keke)	Cat 2 (Car/light Vans)	Cat 3 (Lorries/Trucks)	Cat 4 (Buses/Coaches)	Total
6-7am	8	37	17	8	70
7-8am	32	66	8	5	111
8-9am	18	64	15	2	99
9-10am	7	48	11	3	69
10-11am	12	127	20	3	162
11-12am	16	70	18	5	109
12am-1pm	13	113	40	2	168
1-2pm	8	63	27	2	100
2-3pm	3	38	28	0	69
3-4pm	5	57	33	19	114
4-5pm	14	47	45	12	118
5-6pm	15	60	27	7	109
6-7pm	13	34	11	3	61
<b>Total</b>	<b>164</b>	<b>824</b>	<b>300</b>	<b>71</b>	<b>1359</b>

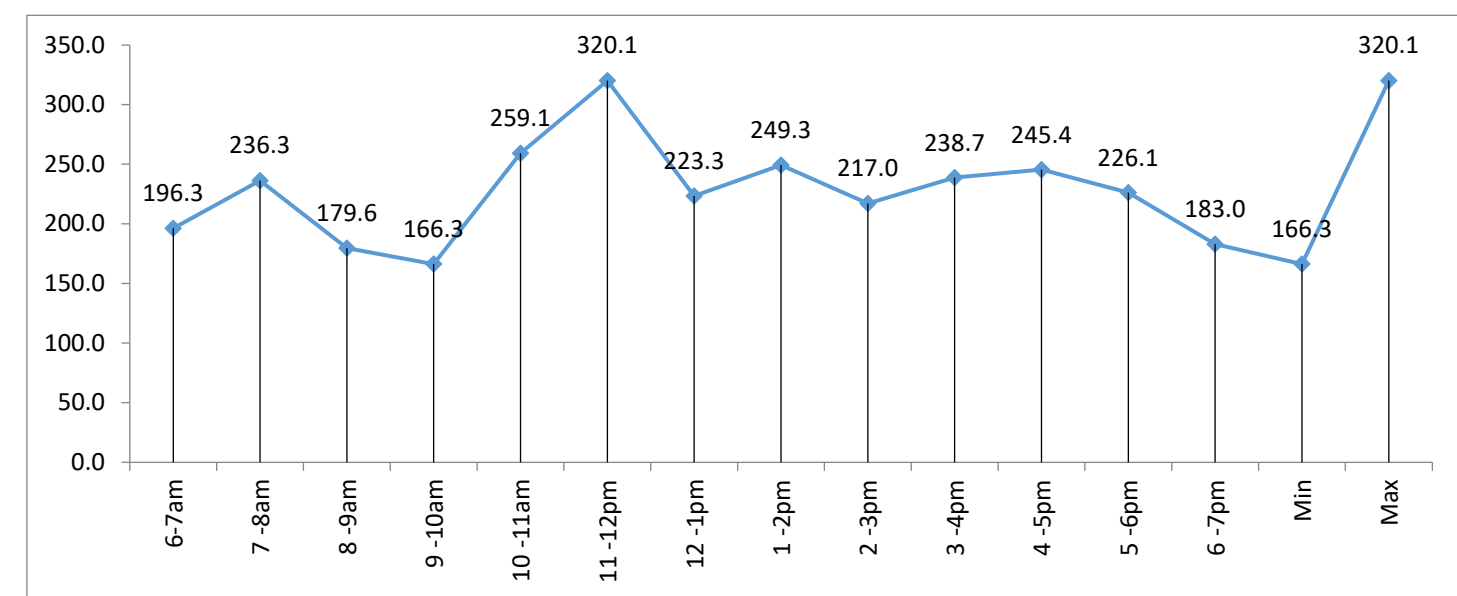
NPA MAIN ENTRANCE (IN) 17/7/2023					
Hours	Cat 1 (Motorcycle/keke)	Cat 2 (Car/light Vans)	Cat 3 (Lorries/Trucks)	Cat 4 (Buses/Coaches)	Total
6-7am	17	220	25	7	269
7-8am	21	270	52	3	346
8-9am	9	255	47	7	318
9-10am	8	225	69	13	315
10-11am	20	290	90	3	403
11-12am	5	435	180	0	620
12am-1pm	0	305	168	15	488
1-2pm	2	390	130	68	590
2-3pm	10	250	120	23	403
3-4pm	0	241	112	6	359
4-5pm	6	302	132	47	487
5-6pm	2	261	80	35	378
6-7pm	4	246	91	46	387
<b>Total</b>	<b>104</b>	<b>3690</b>	<b>1296</b>	<b>273</b>	<b>5363</b>

NPA MAIN ENTRANCE (IN) 18/7/2023					
Hours	Cat 1 (Motorcycle/keke)	Cat 2 (Car/light Vans)	Cat 3 (Lorries/Trucks)	Cat 4 (Buses/Coaches)	Total
6-7am	18	130	33	28	209
7-8am	15	143	31	13	202
8-9am	11	130	30	12	183

Summary							
Category	Thursday 13/7/23	Friday 14/7/23	Saturday 15/7/23	Sunday 16/7/23	Monday 17/7/23	Tuesday 18/7/23	Wednesday 19/7/23
Cat 1 (Motorcycle/Keke)	145	162	142	164	104	156	166
Cat 2 (Car and Light Vans)	2027	2309	1143	824	3690	1698	1742
Cat 3 (Lorries and Trucks)	540	778	611	300	1296	721	735
Cat 4 (Buses and Coaches)	149	166	143	71	273	153	176
<b>Total</b>	<b>2861</b>	<b>3415</b>	<b>2039</b>	<b>1359</b>	<b>5363</b>	<b>2728</b>	<b>2819</b>

Time	Thursday 13/7/23	Friday 14/7/23	Saturday 15/7/23	Sunday 16/7/23	Monday 17/7/23	Tuesday 18/7/23	Wednesday 19/7/23	Ave	Min	Max	Total
6-7am	163	289	203	70	269	209	171	196.3	70	289	1374
7-8am	369	291	173	111	346	202	162	236.3	111	369	1654
8-9am	254	227	119	99	318	183	57	179.6	57	318	1257
9-10am	240	214	114	69	315	62	150	166.3	62	315	1164
10-11am	271	303	155	162	403	292	228	259.1	155	403	1814
11-12pm	246	490	310	109	620	295	171	320.1	109	620	2241
12-1pm	148	233	243	168	488	154	129	223.3	129	488	1563
1-2pm	231	276	166	100	590	11	371	249.3	11	590	1745
2-3pm	196	231	148	69	403	185	287	217.0	69	403	1519
3-4pm	225	252	105	114	359	317	299	238.7	105	359	1671
4-5pm	126	228	135	118	487	250	374	245.4	118	487	1718
5-6pm	261	138	107	109	378	332	258	226.1	107	378	1583
6-7pm	131	243	61	61	387	236	162	183.0	61	387	1281
<b>Total</b>	<b>2861</b>	<b>3415</b>	<b>2039</b>	<b>1359</b>	<b>5363</b>	<b>2728</b>	<b>2819</b>	<b>2940.6</b>	<b>1164</b>	<b>5406</b>	<b>20584</b>

6-7am	7-8am	8-9am	9-10am	10-11am	11-12pm	12-1pm	1-2pm	2-3pm	3-4pm	4-5pm	5-6pm	6-7pm	Min	Max
196.3	236.3	179.6	166.3	259.1	320.1	223.3	249.3	217.0	238.7	245.4	226.1	183.0	166.3	320.1



9-10am	23	10	21	8	62
10-11am	13	203	58	18	292
11-12am	12	227	43	13	295
12am-1pm	6	102	38	8	154
1-2pm	0	0	8	3	11
2-3pm	12	38	130	5	185
3-4pm	2	192	117	6	317
4-5pm	8	160	64	18	250
5-6pm	26	218	76	12	332
6-7pm	10	145	72	9	236
<b>Total</b>	<b>156</b>	<b>1698</b>	<b>721</b>	<b>153</b>	<b>2728</b>

NPA MAIN ENTRANCE (IN) 19/7/2023					
Hours	Cat 1 (Motorcycle/keke)	Cat 2 (Car/light Vans)	Cat 3 (Lorries/Trucks)	Cat 4 (Buses/Coaches)	Total
6-7am	13	110	35	13	171
7-8am	11	113	25	13	162
8-9am	8	10	28	11	57
9-10am	5	98	28	19	150
10-11am	12	127	72	17	228
11-12am	6	101	52	12	171
12am-1pm	7	77	39	6	129
1-2pm	20	225	109	17	371
2-3pm	15	181	85	6	287
3-4pm	13	202	71	13	299
4-5pm	25	220	117	12	374
5-6pm	18	185	40	15	258
6-7pm	13	93	34	22	162
<b>Total</b>	<b>166</b>	<b>1742</b>	<b>735</b>	<b>176</b>	<b>2819</b>

NPA MAIN ENTRANCE (OUT) 13/7/2023					
Hours	Cat 1 (Motorcycle/keke)	Cat 2 (Car/light Vans)	Cat 3 (Lorries/Trucks)	Cat 4 (Buses/Coaches)	Total
6-7am	14	44	12	5	75
7-8am	29	10	11	30	80
8-9am	11	16	11	5	43
9-10am	13	114	29	2	158
10-11am	3	128	36	3	170
11-12am	8	148	51	10	217
12am-1pm	0	66	48	8	122
1-2pm	15	95	65	28	203
2-3pm	23	209	60	0	292
3-4pm	25	195	60	25	305
4-5pm	5	145	65	45	260
5-6pm	0	165	8	0	173
6-7pm	146	125	30	11	312
<b>Total</b>	<b>292</b>	<b>1460</b>	<b>486</b>	<b>172</b>	<b>2410</b>

NPA MAIN ENTRANCE (OUT) 1/7/2023					
Hours	Cat 1 (Motorcycle/keke)	Cat 2 (Car/light Vans)	Cat 3 (Lorries/Trucks)	Cat 4 (Buses/Coaches)	Total
6-7am	19	65	15	19	118
7-8am	19	128	24	28	199
8-9am	10	104	21	1	136
9-10am	11	143	40	1	195
10-11am	12	185	43	1	241
11-12am	10	265	165	25	465
12am-1pm	10	144	42	5	201
1-2pm	39	194	55	16	304
2-3pm	27	235	41	17	320
3-4pm	59	262	65	22	408
4-5pm	60	290	95	42	487
5-6pm	22	70	56	3	151
6-7pm	40	210	50	15	315
<b>Total</b>	<b>338</b>	<b>2295</b>	<b>712</b>	<b>195</b>	<b>3540</b>

NPA MAIN ENTRANCE (OUT) 15/7/2023					
Hours	Cat 1 (Motorcycle/keke)	Cat 2 (Car/light Vans)	Cat 3 (Lorries/Trucks)	Cat 4 (Buses/Coaches)	Total
6-7am	13	86	41	6	146
7-8am	21	80	4	21	126
8-9am	14	67	62	4	147
9-10am	13	61	41	3	118
10-11am	11	81	52	3	147
11-12am	3	93	49	6	151
12am-1pm	12	102	97	0	211
1-2pm	24	146	65	6	241
2-3pm	22	108	73	4	207
3-4pm	26	85	50	19	180
4-5pm	52	112	50	21	235
5-6pm	61	70	36	11	178
6-7pm	30	38	23	0	91
<b>Total</b>	<b>302</b>	<b>1129</b>	<b>643</b>	<b>104</b>	<b>2178</b>

NPA MAIN ENTRANCE (OUT) 16/7/2023					
Hours	Cat 1 (Motorcycle/keke)	Cat 2 (Car/light Vans)	Cat 3 (Lorries/Trucks)	Cat 4 (Buses/Coaches)	Total
6-7am	13	43	13	7	76
7-8am	2	59	5	3	69
8-9am	12	52	7	3	74
9-10am	5	35	0	2	42
10-11am	18	103	45	5	171
11-12am	0	58	47	5	110
12am-1pm	8	95	28	3	134
1-2pm	23	80	21	6	130
2-3pm	7	62	21	2	92
3-4pm	15	78	27	17	137
4-5pm	40	56	19	19	134
5-6pm	31	35	9	3	78
6-7pm	10	15	14	16	55
<b>Total</b>	<b>184</b>	<b>771</b>	<b>256</b>	<b>91</b>	<b>1302</b>

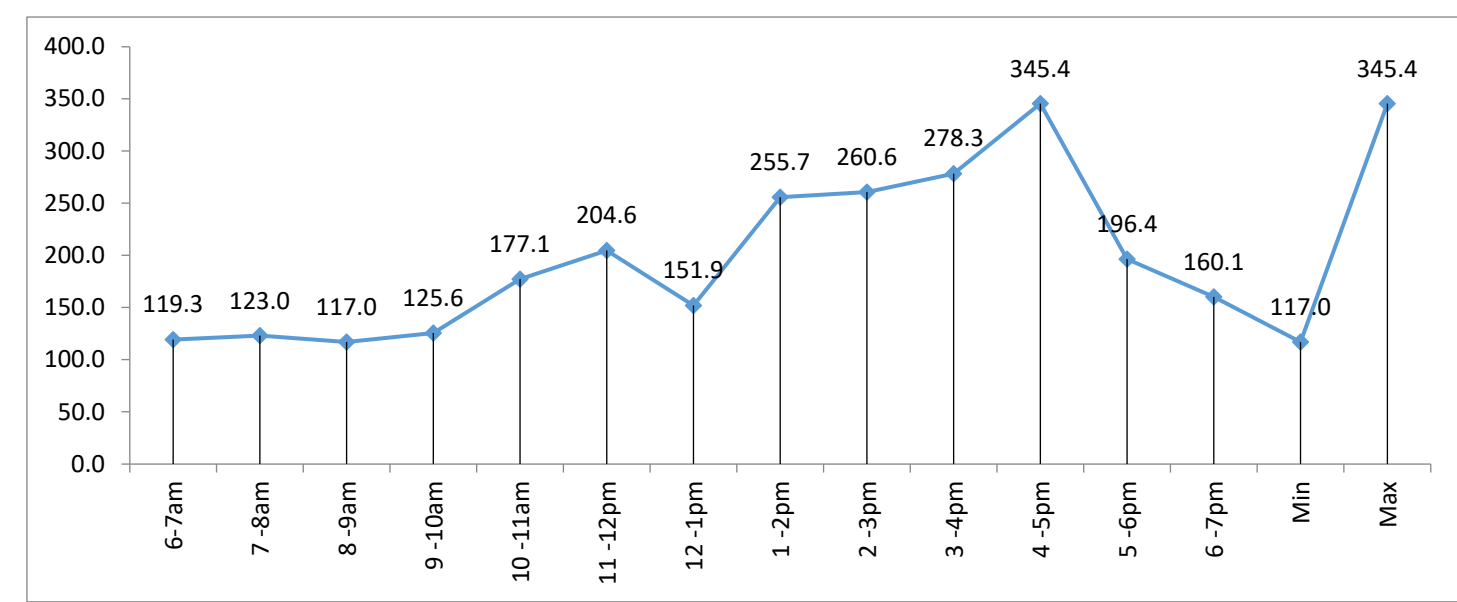
NPA MAIN ENTRANCE (OUT) 17/7/2023					
Hours	Cat 1 (Motorcycle/keke)	Cat 2 (Car/light Vans)	Cat 3 (Lorries/Trucks)	Cat 4 (Buses/Coaches)	Total
6-7am	18	102	20	7	147
7-8am	17	87	30	2	136
8-9am	25	170	37	5	237
9-10am	14	130	35	9	188
10-11am	12	121	36	6	175
11-12am	14	120	29	4	167
12am-1pm	21	95	30	2	148
1-2pm	20	102	31	14	167
2-3pm	23	123	32	5	183
3-4pm	21	112	34	3	170
4-5pm	16	132	32	7	187
5-6pm	12	124	40	6	182
6-7pm	14	125	28	8	175
<b>Total</b>	<b>227</b>	<b>1543</b>	<b>414</b>	<b>78</b>	<b>2262</b>

NPA MAIN ENTRANCE (OUT) 18/7/2023					
Hours	Cat 1 (Motorcycle/keke)	Cat 2 (Car/light Vans)	Cat 3 (Lorries/Trucks)	Cat 4 (Buses/Coaches)	Total
6-7am	10	73	35	12	130
7-8am	8	86	17	10	121
8-9am	7	53	12	13	85

Summary							
Category	Thursday 13/7/23	Friday 14/7/23	Saturday 15/7/23	Sunday 16/7/23	Monday 17/7/23	Tuesday 18/7/23	Wednesday 19/7/23
Cat 1 (Motorcycle/Keke)	292	338	302	184	227	251	341
Cat 2 (Car and Light Vans)	1460	2295	1129	771	1543	1908	1600
Cat 3 (Lorries and Trucks)	486	712	643	256	414	787	611
Cat 4 (Buses and Coaches)	172	195	104	91	78	182	233
<b>Total</b>	<b>2410</b>	<b>3540</b>	<b>2178</b>	<b>1302</b>	<b>2262</b>	<b>3128</b>	<b>2785</b>

Time	Thursday 13/7/23	Friday 14/7/23	Saturday 15/7/23	Sunday 16/7/23	Monday 17/7/23	Tuesday 18/7/23	Wednesday 19/7/23	Ave	Min	Max	Total
6-7am	75	118	146	76	147	130	143	119.3	75	147	835
7-8am	80	199	126	69	136	121	130	123.0	69	199	861
8-9am	43	136	147	74	237	85	97	117.0	43	237	819
9-10am	158	195	118	42	188	103	75	125.6	42	195	879
10-11am	170	241	147	171	175	181	155	177.1	147	241	1240
11-12pm	217	465	151	110	167	158	164	204.6	110	465	1432
12-1pm	122	201	211	134	148	108	139	151.9	108	211	1063
1-2pm	203	304	241	130	167	432	313	255.7	130	432	1790
2-3pm	292	320	207	92	183	390	340	260.6	92	390	1824
3-4pm	305	408	180	137	170	393	355	278.3	137	408	1948
4-5pm	260	487	235	134	187	680	435	345.4	134	680	2418
5-6pm	173	151	178	78	182	276	337	196.4	78	337	1375
6-7pm	312	315	91	55	175	71	102	160.1	55	315	1121
<b>Total</b>	<b>2410</b>	<b>3540</b>	<b>2178</b>	<b>1302</b>	<b>2262</b>	<b>3128</b>	<b>2785</b>	<b>2515.0</b>	<b>1220</b>	<b>4257</b>	<b>17605</b>

6-7am	7-8am	8-9am	9-10am	10-11am	11-12pm	12-1pm	1-2pm	2-3pm	3-4pm	4-5pm	5-6pm	6-7pm	Min	Max
119.3	123.0	117.0	125.6	177.1	204.6	151.9	255.7	260.6	278.3	345.4	196.4	160.1	117.0	345.4



NPA MAIN ENTRANCE (OUT) 18/7/2023					
Hours	Cat 1 (Motorcycle/keke)	Cat 2 (Car/light Vans)	Cat 3 (Lorries/Trucks)	Cat 4 (Buses/Coaches)	Total
6-7am	10	73	35	12	130
7-8am	8	86	17	10	121
8-9am	7	53	12	13	85

9-10am	12	63	18	10	103
10-11am	8	112	48	13	181
11-12am	6	98	42	12	158
12am-1pm	3	54	43	8	108
1-2pm	33	280	113	6	432
2-3pm	18	215	143	14	390
3-4pm	27	290	60	16	393
4-5pm	67	375	188	50	680
5-6pm	40	171	48	17	276
6-7pm	12	38	20	1	71
<b>Total</b>	<b>251</b>	<b>1908</b>	<b>787</b>	<b>182</b>	<b>3128</b>

NPA MAIN ENTRANCE (OUT) 19/7/2023					
Hours	Cat 1 (Motorcycle/keke)	Cat 2 (Car/light Vans)	Cat 3 (Lorries/Trucks)	Cat 4 (Buses/Coaches)	Total
6-7am	15	73	40	15	143
7-8am	8	77	27	18	130
8-9am	5	64	20	8	97
9-10am	8	43	17	7	75
10-11am	21	86	32	16	155
11-12am	12	87	48	17	164
12am-1pm	11	72	45	11	139
1-2pm	50	150	85	28	313
2-3pm	35	218	74	13	340
3-4pm	35	225	60	35	355
4-5pm	60	210	120	45	435
5-6pm	60	220	39	18	337
6-7pm	21	75	4	2	102
<b>Total</b>	<b>341</b>	<b>1600</b>	<b>611</b>	<b>233</b>	<b>2785</b>



WACT/OMT ENTRANCE OFF FOT DUAL CARRIAGE ROAD (OUT) 13/7/2023					
Hours	Cat 1 (Motorcycle/keke)	Cat 2 (Car/light Vans)	Cat 3 (Lorries/Trucks)	Cat 4 (Buses/Coaches)	Total
6-7am	9	43	14	0	66
7-8am	18	87	10	0	115
8-9am	13	94	13	1	121
9-10am	6	51	8	0	65
10-11am	11	65	19	8	103
11-12am	5	55	8	2	70
12am-1pm	16	69	11	10	106
1-2pm	11	55	20	3	89
2-3pm	8	45	9	6	68
3-4pm	7	61	10	2	80
4-5pm	18	59	27	7	111
5-6pm	12	65	12	3	92
6-7pm	13	57	14	4	88
<b>Total</b>	<b>147</b>	<b>806</b>	<b>175</b>	<b>46</b>	<b>1174</b>

WACT/OMT ENTRANCE OFF FOT DUAL CARRIAGE ROAD (OUT) 14/7/2023					
Hours	Cat 1 (Motorcycle/keke)	Cat 2 (Car/light Vans)	Cat 3 (Lorries/Trucks)	Cat 4 (Buses/Coaches)	Total
6-7am	34	54	1	4	93
7-8am	20	65	3	8	96
8-9am	7	61	5	4	77
9-10am	4	60	4	2	70
10-11am	3	62	16	4	85
11-12am	8	75	12	3	98
12am-1pm	4	37	5	1	47
1-2pm	20	93	35	3	151
2-3pm	10	61	22	2	95
3-4pm	12	99	32	10	153
4-5pm	17	85	36	0	138
5-6pm	23	60	55	5	143
6-7pm	16	47	18	0	81
<b>Total</b>	<b>178</b>	<b>859</b>	<b>244</b>	<b>46</b>	<b>1327</b>

WACT/OMT ENTRANCE OFF FOT DUAL CARRIAGE ROAD (OUT) 15/7/2023					
Hours	Cat 1 (Motorcycle/keke)	Cat 2 (Car/light Vans)	Cat 3 (Lorries/Trucks)	Cat 4 (Buses/Coaches)	Total
6-7am	12	8	1	7	28
7-8am	17	30	8	3	58
8-9am	17	31	10	5	63
9-10am	10	25	7	3	45
10-11am	6	22	18	5	51
11-12am	5	29	10	4	48
12am-1pm	7	19	7	2	35
1-2pm	2	4	5	0	11
2-3pm	6	11	17	4	38
3-4pm	3	14	16	2	35
4-5pm	6	19	9	0	34
5-6pm	5	22	6	8	41
6-7pm	8	10	3	3	24
<b>Total</b>	<b>104</b>	<b>244</b>	<b>117</b>	<b>46</b>	<b>511</b>

WACT/OMT ENTRANCE OFF FOT DUAL CARRIAGE ROAD (OUT) 16/7/2023					
Hours	Cat 1 (Motorcycle/keke)	Cat 2 (Car/light Vans)	Cat 3 (Lorries/Trucks)	Cat 4 (Buses/Coaches)	Total
6-7am	12	18	2	2	44
7-8am	10	7	8	1	26
8-9am	5	9	8	4	26
9-10am	7	9	6	7	29
10-11am	7	9	6	7	29
11-12am	6	11	8	2	27
12am-1pm	6	8	6	2	22
1-2pm	8	7	8	1	24
2-3pm	0	8	5	0	13
3-4pm	0	12	7	0	19
4-5pm	9	9	8	5	31
5-6pm	7	11	5	0	23
6-7pm	3	13	12	0	28
<b>Total</b>	<b>80</b>	<b>131</b>	<b>99</b>	<b>31</b>	<b>341</b>

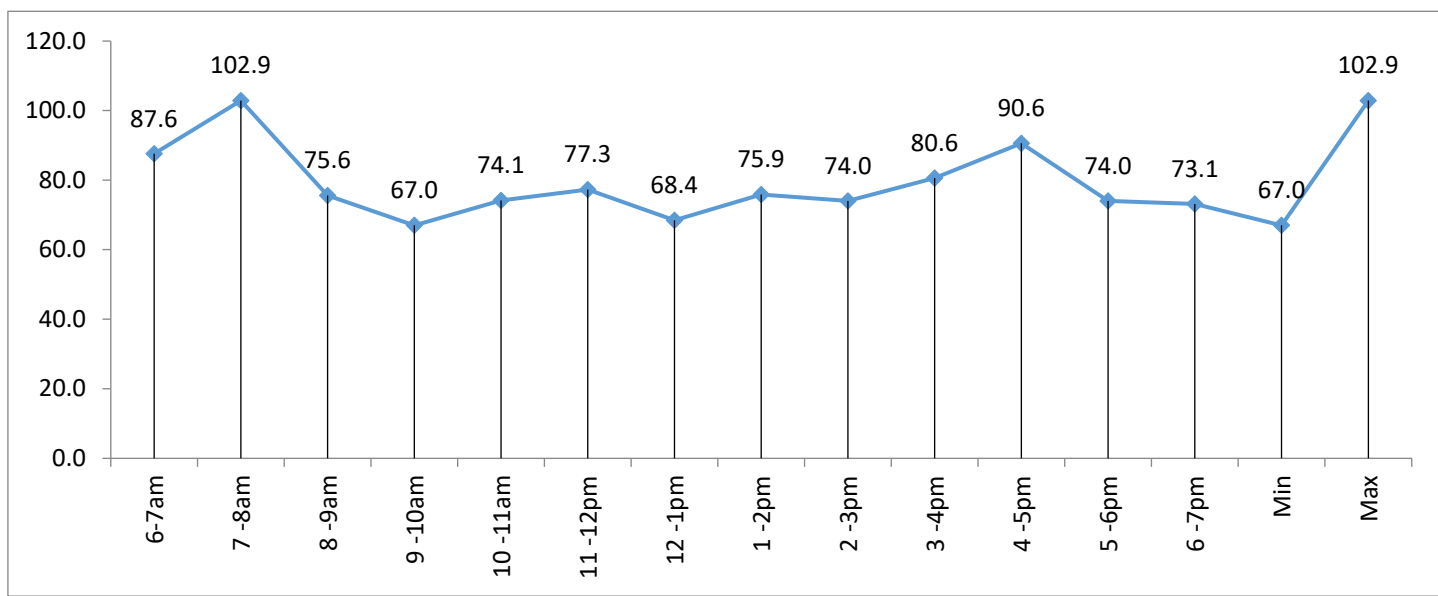
WACT/OMT ENTRANCE OFF FOT DUAL CARRIAGE ROAD (OUT) 17/7/2023					
Hours	Cat 1 (Motorcycle/keke)	Cat 2 (Car/light Vans)	Cat 3 (Lorries/Trucks)	Cat 4 (Buses/Coaches)	Total
6-7am	55	64	37	20	176
7-8am	43	62	33	5	143
8-9am	9	69	3	5	86
9-10am	10	70	5	1	86
10-11am	19	68	7	3	97
11-12am	8	69	6	3	86
12am-1pm	11	79	13	3	106
1-2pm	3	42	16	0	61
2-3pm	10	94	6	2	112
3-4pm	7	73	9	5	94
4-5pm	12	105	12	7	136
5-6pm	23	10	18	12	63
6-7pm	24	79	17	5	125
<b>Total</b>	<b>234</b>	<b>884</b>	<b>182</b>	<b>71</b>	<b>1371</b>

WACT/OMT ENTRANCE OFF FOT DUAL CARRIAGE ROAD (OUT) 18/7/2023					
Hours	Cat 1 (Motorcycle/keke)	Cat 2 (Car/light Vans)	Cat 3 (Lorries/Trucks)	Cat 4 (Buses/Coaches)	Total
6-7am	14	55	28	18	115
7-8am	24	83	32	21	160
8-9am	8	62	4	5	79

Category	Thursday 13/7/23	Friday 14/7/23	Saturday 15/7/23	Sunday 16/7/23	Monday 17/7/23	Tuesday 18/7/23	Wednesday 19/7/23
Cat 1 (Motorcycle/Keke)	147	178	104	80	234	129	147
Cat 2 (Car and Light Vans)	806	859	244	131	884	818	864
Cat 3 (Lorries and Trucks)	175	244	117	99	182	162	161
Cat 4 (Buses and Coaches)	46	46	46	31	71	89	53
<b>Total</b>	<b>1174</b>	<b>1327</b>	<b>511</b>	<b>341</b>	<b>1371</b>	<b>1198</b>	<b>1225</b>

Time	Thursday 13/7/23	Friday 14/7/23	Saturday 15/7/23	Sunday 16/7/23	Monday 17/7/23	Tuesday 18/7/23	Wednesday 19/7/23	Ave	Min	Max	Total
6-7am	66	93	28	44	176	115	91	87.6	28	176	613
7-8am	115	96	58	26	143	160	122	102.9	26	160	720
8-9am	121	77	63	26	86	79	77	75.6	26	121	529
9-10am	65	70	45	29	86	80	94	67.0	29	94	469
10-11am	103	85	51	29	97	76	78	74.1	29	103	519
11-12pm	70	98	48	27	86	101	111	77.3	27	111	541
12-1pm	106	47	35	22	106	80	83	68.4	22	106	479
1-2pm	89	151	11	24	61	85	110	75.9	11	151	531
2-3pm	68	95	38	13	112	88	104	74.0	13	112	518
3-4pm	80	153	35	19	94	119	64	80.6	19	153	564
4-5pm	111	138	34	31	136	87	97	90.6	31	138	634
5-6pm	92	143	41	23	63	66	90	74.0	23	143	518
6-7pm	88	81	24	28	125	62	104	73.1	24	125	512
<b>Total</b>	<b>1174</b>	<b>1327</b>	<b>511</b>	<b>341</b>	<b>1371</b>	<b>1198</b>	<b>1225</b>	<b>1021.0</b>	<b>308</b>	<b>1693</b>	<b>7147</b>

6-7am	7-8am	8-9am	9-10am	10-11am	11-12pm	12-1pm	1-2pm	2-3pm	3-4pm	4-5pm	5-6pm	6-7pm	Min	Max
87.6	102.9	75.6	67.0	74.1	77.3	68.4	75.9	74.0	80.6	90.6	74.0	73.1	67.0	102.9



9-10am	9	68	1	2	80
10-11am	6	60	9	1	76
11-12am	7	80	9	5	101
12am-1pm	5	57	13	5	80
1-2pm	3	59	17	6	85
2-3pm	2	68	11	7	88
3-4pm	7	89	13	10	119
4-5pm	4	68	15	0	87
5-6pm	19	34	6	7	66
6-7pm	21	35	4	2	62
<b>Total</b>	<b>129</b>	<b>818</b>	<b>162</b>	<b>89</b>	<b>1198</b>

WACT/OMT ENTRANCE OFF FOT DUAL CARRIAGE ROAD (OUT) 19/7/2023					
Hours	Cat 1 (Motorcycle/keke)	Cat 2 (Car/light Vans)	Cat 3 (Lorries/Trucks)	Cat 4 (Buses/Coaches)	Total
6-7am	12	38	33	8	91
7-8am	18	76	23	5	122
8-9am	14	54	6	3	77
9-10am	14	69	10	1	94
10-11am	8	60	7	3	78
11-12am	17	80	7	7	111
12am-1pm	6	65	11	1	83
1-2pm	19	68	14	9	110
2-3pm	7	82	12	3	104
3-4pm	5	54	5	0	64
4-5pm	6	68	14	9	97
5-6pm	13	63	12	2	90
6-7pm	8	87	7	2	104
<b>Total</b>	<b>147</b>	<b>864</b>	<b>161</b>	<b>53</b>	<b>1225</b>

WACT/OMT ENTRANCE OFF FOT DUAL CARRIAGE ROAD (OUT) 13/7/2023					
Hours	Cat 1 (Motorcycle/keke)	Cat 2 (Car/light Vans)	Cat 3 (Lorries/Trucks)	Cat 4 (Buses/Coaches)	Total
6-7am	9	30	17	2	58
7-8am	18	31	13	0	62
8-9am	11	67	22	0	100
9-10am	1	27	16	0	44
10-11am	10	85	37	2	134
11-12am	7	73	35	3	118
12am-1pm	12	110	35	13	170
1-2pm	15	107	59	1	182
2-3pm	15	107	37	0	159
3-4pm	15	57	24	10	106
4-5pm	13	50	18	6	87
5-6pm	10	52	14	7	83
6-7pm	14	58	12	6	90
<b>Total</b>	<b>150</b>	<b>854</b>	<b>339</b>	<b>50</b>	<b>1393</b>

WACT/OMT ENTRANCE OFF FOT DUAL CARRIAGE ROAD (OUT) 14/7/2023					
Hours	Cat 1 (Motorcycle/keke)	Cat 2 (Car/light Vans)	Cat 3 (Lorries/Trucks)	Cat 4 (Buses/Coaches)	Total
6-7am	27	30	8	0	65
7-8am	13	40	8	10	71
8-9am	13	40	24	4	81
9-10am	5	34	24	3	66
10-11am	5	51	12	2	70
11-12am	5	64	28	3	100
12am-1pm	16	38	19	0	73
1-2pm	8	36	10	0	54
2-3pm	9	34	8	4	55
3-4pm	10	40	13	10	73
4-5pm	14	39	14	3	70
5-6pm	15	30	17	5	67
6-7pm	10	31	12	8	61
<b>Total</b>	<b>150</b>	<b>507</b>	<b>197</b>	<b>52</b>	<b>906</b>

WACT/OMT ENTRANCE OFF FOT DUAL CARRIAGE ROAD (OUT) 15/7/2023					
Hours	Cat 1 (Motorcycle/keke)	Cat 2 (Car/light Vans)	Cat 3 (Lorries/Trucks)	Cat 4 (Buses/Coaches)	Total
6-7am	8	23	19	0	50
7-8am	12	30	12	10	64
8-9am	19	29	17	16	81
9-10am	15	33	32	1	81
10-11am	5	15	19	3	42
11-12am	6	24	24	1	55
12am-1pm	8	20	25	3	56
1-2pm	3	25	2	2	32
2-3pm	8	31	28	3	70
3-4pm	6	15	27	9	57
4-5pm	10	20	17	0	47
5-6pm	8	12	22	0	42
6-7pm	5	12	7	8	32
<b>Total</b>	<b>113</b>	<b>289</b>	<b>251</b>	<b>56</b>	<b>709</b>

WACT/OMT ENTRANCE OFF FOT DUAL CARRIAGE ROAD (OUT) 16/7/2023					
Hours	Cat 1 (Motorcycle/keke)	Cat 2 (Car/light Vans)	Cat 3 (Lorries/Trucks)	Cat 4 (Buses/Coaches)	Total
6-7am	4	13	12	1	30
7-8am	8	11	13	2	34
8-9am	4	18	12	3	37
9-10am	3	10	8	3	24
10-11am	5	9	8	0	22
11-12am	10	19	12	2	43
12am-1pm	4	12	13	0	29
1-2pm	3	9	4	0	16
2-3pm	3	22	17	0	42
3-4pm	7	18	13	0	38
4-5pm	1	8	10	0	19
5-6pm	5	12	10	0	27
6-7pm	4	5	13	0	22
<b>Total</b>	<b>61</b>	<b>166</b>	<b>145</b>	<b>11</b>	<b>383</b>

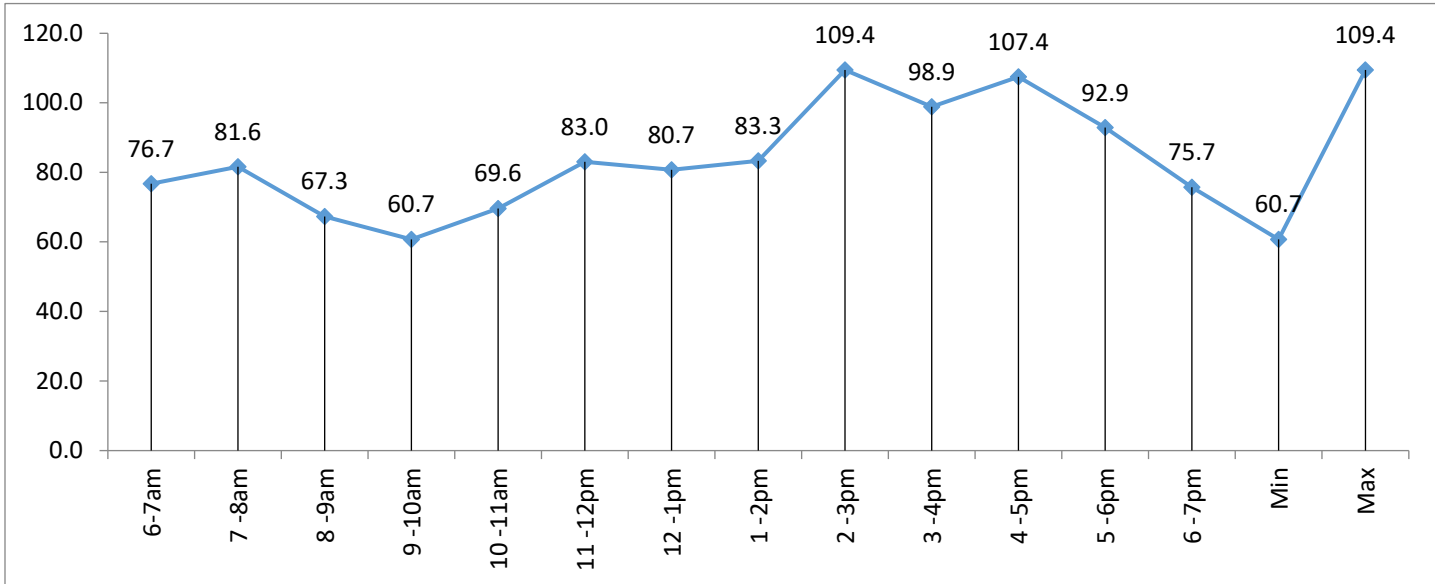
WACT/OMT ENTRANCE OFF FOT DUAL CARRIAGE ROAD (OUT) 17/7/2023					
Hours	Cat 1 (Motorcycle/keke)	Cat 2 (Car/light Vans)	Cat 3 (Lorries/Trucks)	Cat 4 (Buses/Coaches)	Total
6-7am	38	59	44	7	148
7-8am	45	30	31	3	109
8-9am	8	45	14	3	70
9-10am	10	46	11	0	67
10-11am	14	49	14	2	79
11-12am	8	59	14	2	83
12am-1pm	12	65	17	1	95
1-2pm	5	41	27	0	73
2-3pm	12	95	25	2	134
3-4pm	9	11	28	10	58
4-5pm	3	143	62	6	214
5-6pm	20	78	73	3	174
6-7pm	12	57	72	2	143
<b>Total</b>	<b>196</b>	<b>778</b>	<b>432</b>	<b>41</b>	<b>1447</b>

WACT/OMT ENTRANCE OFF FOT DUAL CARRIAGE ROAD (OUT) 18/7/2023					
Hours	Cat 1 (Motorcycle/keke)	Cat 2 (Car/light Vans)	Cat 3 (Lorries/Trucks)	Cat 4 (Buses/Coaches)	Total
6-7am	12	49	34	28	123
7-8am	18	76	23	16	133
8-9am	3	28	11	2	44

Category	Thursday 13/7/23	Friday 14/7/23	Saturday 15/7/23	Sunday 16/7/23	Monday 17/7/23	Tuesday 18/7/23	Wednesday 19/7/23
Cat 1 (Motorcycle/keke)	150	150	113	61	196	131	150
Cat 2 (Car and Light Vans)	854	507	289	166	778	861	732
Cat 3 (Lorries and Trucks)	339	197	251	145	432	404	391
Cat 4 (Buses and Coaches)	50	52	56	11	41	76	27
<b>Total</b>	<b>1393</b>	<b>906</b>	<b>709</b>	<b>383</b>	<b>1447</b>	<b>1472</b>	<b>1300</b>

Time	Thursday 13/7/23	Friday 14/7/23	Saturday 15/7/23	Sunday 16/7/23	Monday 17/7/23	Tuesday 18/7/23	Wednesday 19/7/23	Ave	Min	Max	Total
6-7am	58	65	50	30	148	123	63	76.7	30	148	537
7-8am	62	71	64	34	109	133	98	81.6	34	133	571
8-9am	100	81	81	37	70	44	58	67.3	37	100	471
9-10am	44	66	81	24	67	70	73	60.7	24	81	425
10-11am	134	70	42	22	79	67	73	69.6	22	134	487
11-12pm	118	100	55	43	83	82	100	83.0	43	118	581
12-1pm	170	73	56	29	95	81	61	80.7	29	170	565
1-2pm	182	54	32	16	73	130	96	83.3	16	182	583
2-3pm	159	55	70	42	134	136	170	109.4	42	170	766
3-4pm	106	73	57	38	58	192	168	98.9	38	192	692
4-5pm	87	70	47	19	214	189	126	107.4	19	214	752
5-6pm	83	67	42	27	174	123	134	92.9	27	174	650
6-7pm	90	61	32	22	143	102	80	75.7	22	143	530
<b>Total</b>	<b>1393</b>	<b>906</b>	<b>709</b>	<b>383</b>	<b>1447</b>	<b>1472</b>	<b>1300</b>	<b>1087.1</b>	<b>383</b>	<b>1959</b>	<b>7610</b>

6-7am	7-8am	8-9am	9-10am	10-11am	11-12pm	12-1pm	1-2pm	2-3pm	3-4pm	4-5pm	5-6pm	6-7pm	Min	Max
76.7	81.6	67.3	60.7	69.6	83.0	80.7	83.3	109.4	98.9	107.4	92.9	75.7	60.7	109.4



9-10am	9	42	18	1	70
10-11am	6	43	16	2	67
11-12am	5	60	16	1	82
12am-1pm	7	50	22	2	81
1-2pm	6	69	50	5	130
2-3pm	3	87	42	4	136
3-4pm	18	103	58	13	192
4-5pm	2	114	73	0	189
5-6pm	23	71	27	2	123
6-7pm	19	69	14	0	102
<b>Total</b>	<b>131</b>	<b>861</b>	<b>404</b>	<b>76</b>	<b>1472</b>

WACT/OMT ENTRANCE OFF FOT DUAL CARRIAGE ROAD (OUT) 19/7/2023					
Hours	Cat 1 (Motorcycle/keke)	Cat 2 (Car/light Vans)	Cat 3 (Lorries/Trucks)	Cat 4 (Buses/Coaches)	Total
6-7am	12	23	25	3	63
7-8am	21	47	26	4	98
8-9am	8	31	17	2	58
9-10am	12	44	17	0	73
10-11am	7	49	14	3	73
11-12am	19	58	22	1	100
12am-1pm	13	32	15	1	61
1-2pm	17	63	14	2	96
2-3pm	5	103	62	0	170
3-4pm	3	107	49	9	168
4-5pm	12	48	64	2	126
5-6pm	18	74	42	0	134
6-7pm	3	53	24	0	80
<b>Total</b>	<b>150</b>	<b>732</b>	<b>391</b>	<b>27</b>	<b>1300</b>

NEW WACT/OMT ROAD UNDER CONSTRUCTION (IN) 13/7/2023					
Hours	Cat 1 (Motorcycle/keke)	Cat 2 (Car/light Vans)	Cat 3 (Lorries/Trucks)	Cat 4 (Buses/Coaches)	Total
6-7am	12	31	11	1	55
7-8am	14	40	13	1	68
8-9am	12	34	28	2	76
9-10am	15	22	16	0	53
10-11am	17	36	28	3	84
11-12am	13	28	7	1	49
12am-1pm	5	53	27	1	86
1-2pm	7	32	30	1	70
2-3pm	7	43	34	1	85
3-4pm	5	40	38	0	83
4-5pm	10	43	34	3	90
5-6pm	14	30	29	2	75
6-7pm	14	27	38	3	82
<b>Total</b>	<b>145</b>	<b>459</b>	<b>333</b>	<b>19</b>	<b>956</b>

NEW WACT/OMT ROAD UNDER CONSTRUCTION (IN) 14/7/2023					
Hours	Cat 1 (Motorcycle/keke)	Cat 2 (Car/light Vans)	Cat 3 (Lorries/Trucks)	Cat 4 (Buses/Coaches)	Total
6-7am	15	25	4	4	48
7-8am	10	41	20	1	72
8-9am	11	30	18	0	59
9-10am	3	38	32	0	73
10-11am	2	45	28	1	76
11-12am	10	43	23	0	76
12am-1pm	8	25	20	1	54
1-2pm	17	57	30	1	105
2-3pm	11	47	33	1	92
3-4pm	9	40	45	4	98
4-5pm	20	30	28	1	79
5-6pm	9	31	40	3	83
6-7pm	5	24	22	0	51
<b>Total</b>	<b>130</b>	<b>476</b>	<b>343</b>	<b>17</b>	<b>966</b>

NEW WACT/OMT ROAD UNDER CONSTRUCTION (IN) 15/7/2023					
Hours	Cat 1 (Motorcycle/keke)	Cat 2 (Car/light Vans)	Cat 3 (Lorries/Trucks)	Cat 4 (Buses/Coaches)	Total
6-7am	4	4	5	1	14
7-8am	8	14	16	1	39
8-9am	12	11	10	13	46
9-10am	3	4	4	3	14
10-11am	3	4	9	1	17
11-12am	4	3	4	0	11
12am-1pm	4	8	7	1	20
1-2pm	6	17	40	3	66
2-3pm	6	15	20	1	42
3-4pm	4	13	26	1	44
4-5pm	9	9	15	1	34
5-6pm	14	22	12	0	48
6-7pm	7	8	12	0	27
<b>Total</b>	<b>84</b>	<b>132</b>	<b>180</b>	<b>26</b>	<b>422</b>

NEW WACT/OMT ROAD UNDER CONSTRUCTION (IN) 16/7/2023					
Hours	Cat 1 (Motorcycle/keke)	Cat 2 (Car/light Vans)	Cat 3 (Lorries/Trucks)	Cat 4 (Buses/Coaches)	Total
6-7am	2	4	3	2	11
7-8am	6	12	20	1	39
8-9am	10	10	10	1	31
9-10am	2	4	3	1	10
10-11am	4	4	13	1	22
11-12am	1	3	6	2	12
12am-1pm	3	7	8	1	19
1-2pm	0	2	18	0	20
2-3pm	1	6	22	0	29
3-4pm	4	7	18	0	29
4-5pm	5	7	15	0	27
5-6pm	14	15	25	0	54
6-7pm	9	6	11	0	26
<b>Total</b>	<b>61</b>	<b>87</b>	<b>172</b>	<b>9</b>	<b>329</b>

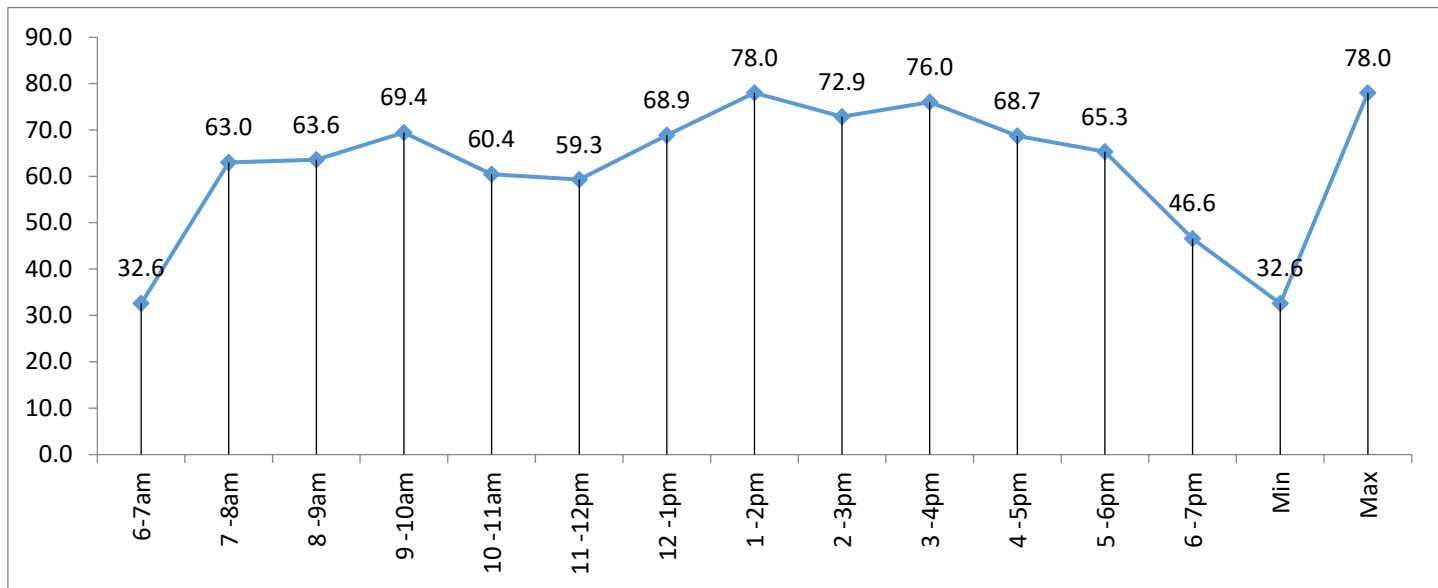
NEW WACT/OMT ROAD UNDER CONSTRUCTION (IN) 17/7/2023					
Hours	Cat 1 (Motorcycle/keke)	Cat 2 (Car/light Vans)	Cat 3 (Lorries/Trucks)	Cat 4 (Buses/Coaches)	Total
6-7am	5	15	15	1	36
7-8am	7	10	10	0	27
8-9am	8	30	13	1	52
9-10am	9	52	20	1	82
10-11am	12	48	24	1	85
11-12am	14	55	50	2	121
12am-1pm	7	32	39	7	85
1-2pm	6	49	28	0	83
2-3pm	8	59	23	1	91
3-4pm	6	50	34	2	92
4-5pm	21	40	21	1	83
5-6pm	11	28	31	0	70
6-7pm	12	18	8	0	38
<b>Total</b>	<b>126</b>	<b>486</b>	<b>316</b>	<b>17</b>	<b>945</b>

NEW WACT/OMT ROAD UNDER CONSTRUCTION (IN) 18/7/2023					
Hours	Cat 1 (Motorcycle/keke)	Cat 2 (Car/light Vans)	Cat 3 (Lorries/Trucks)	Cat 4 (Buses/Coaches)	Total
6-7am	7	10	13	3	33
7-8am	7	37	26	3	73
8-9am	10	40	24	1	75

Category	Thursday 13/7/23	Friday 14/7/23	Saturday 15/7/23	Sunday 16/7/23	Monday 17/7/23	Tuesday 18/7/23	Wednesday 19/7/23
Cat 1 (Motorcycle/Keke)	145	130	84	61	126	168	216
Cat 2 (Car and Light Vans)	459	476	132	87	486	464	431
Cat 3 (Lorries and Trucks)	333	343	180	172	316	379	447
Cat 4 (Buses and Coaches)	19	17	26	9	17	18	31
<b>Total</b>	<b>956</b>	<b>966</b>	<b>422</b>	<b>329</b>	<b>945</b>	<b>1029</b>	<b>1125</b>

Time	Thursday 13/7/23	Friday 14/7/23	Saturday 15/7/23	Sunday 16/7/23	Monday 17/7/23	Tuesday 18/7/23	Wednesday 19/7/23	Ave	Min	Max	Total
6-7am	55	48	14	11	36	33	31	32.6	11	55	228
7-8am	68	72	39	39	27	73	123	63.0	27	123	441
8-9am	76	59	46	31	52	75	106	63.6	31	106	445
9-10am	53	73	14	10	82	110	144	69.4	10	144	486
10-11am	84	76	17	22	85	75	64	60.4	17	85	423
11-12pm	49	76	11	12	121	57	89	59.3	11	121	415
12-1pm	86	54	20	19	85	108	110	68.9	19	110	482
1-2pm	70	105	66	20	83	112	90	78.0	20	112	546
2-3pm	85	92	42	29	91	85	86	72.9	29	92	510
3-4pm	83	98	44	29	92	96	90	76.0	29	98	532
4-5pm	90	79	34	27	83	75	93	68.7	27	93	481
5-6pm	75	83	48	54	70	75	52	65.3	48	83	457
6-7pm	82	51	27	26	38	55	47	46.6	26	82	326
<b>Total</b>	<b>956</b>	<b>966</b>	<b>422</b>	<b>329</b>	<b>945</b>	<b>1029</b>	<b>1125</b>	<b>824.6</b>	<b>305</b>	<b>1304</b>	<b>5772</b>

6-7am	7-8am	8-9am	9-10am	10-11am	11-12pm	12-1pm	1-2pm	2-3pm	3-4pm	4-5pm	5-6pm	6-7pm	Min	Max
32.6	63.0	63.6	69.4	60.4	59.3	68.9	78.0	72.9	76.0	68.7	65.3	46.6	32.6	78.0



9-10am	20	55	35	0	110
10-11am	10	33	30	2	75
11-12am	22	16	17	2	57
12am-1pm	15	70	21	2	108
1-2pm	12	53	47	0	112
2-3pm	9	44	32	0	85
3-4pm	10	40	44	2	96
4-5pm	7	27	40	1	75
5-6pm	23	24	28	0	75
6-7pm	16	15	22	2	55
<b>Total</b>	<b>168</b>	<b>464</b>	<b>379</b>	<b>18</b>	<b>1029</b>

NEW WACT/OMT ROAD UNDER CONSTRUCTION (IN) 19/7/2023					
Hours	Cat 1 (Motorcycle/keke)	Cat 2 (Car/light Vans)	Cat 3 (Lorries/Trucks)	Cat 4 (Buses/Coaches)	Total
6-7am	9	8	5	9	31
7-8am	23	58	39	3	123
8-9am	14	47	38	7	106
9-10am	39	45	60	0	144
10-11am	17	25	20	2	64
11-12am	22	32	33	2	89
12am-1pm	20	44	44	2	110
1-2pm	10	45	33	2	90
2-3pm	16	30	40	0	86
3-4pm	8	36	44	2	90
4-5pm	24	25	43	1	93
5-6pm	7	21	23	1	52
6-7pm	7	15	25	0	47
<b>Total</b>	<b>216</b>	<b>431</b>	<b>447</b>	<b>31</b>	<b>1125</b>

NEW WACT/OMT ROAD UNDER CONSTRUCTION (OUT) 13/7/2023					
Hours	Cat 1 (Motorcycle/keke)	Cat 2 (Car/light Vans)	Cat 3 (Lorries/Trucks)	Cat 4 (Buses/Coaches)	Total
6-7am	12	20	10	1	43
7-8am	15	32	21	2	70
8-9am	14	34	18	4	70
9-10am	16	31	23	1	71
10-11am	19	37	18	1	75
11-12am	13	27	10	1	51
12am-1pm	5	46	30	1	82
1-2pm	0	35	29	1	65
2-3pm	4	41	14	1	60
3-4pm	12	57	21	0	90
4-5pm	12	65	17	4	98
5-6pm	14	54	22	1	91
6-7pm	7	4	24	0	35
<b>Total</b>	<b>143</b>	<b>483</b>	<b>257</b>	<b>18</b>	<b>901</b>

NEW WACT/OMT ROAD UNDER CONSTRUCTION (OUT) 14/7/2023					
Hours	Cat 1 (Motorcycle/keke)	Cat 2 (Car/light Vans)	Cat 3 (Lorries/Trucks)	Cat 4 (Buses/Coaches)	Total
6-7am	24	10	3	1	38
7-8am	9	22	6	1	38
8-9am	8	30	14	1	53
9-10am	2	25	18	0	45
10-11am	3	28	17	1	49
11-12am	9	45	28	0	82
12am-1pm	10	36	35	0	81
1-2pm	13	64	16	1	94
2-3pm	14	44	8	0	66
3-4pm	11	63	10	3	87
4-5pm	15	55	31	1	102
5-6pm	13	47	27	0	87
6-7pm	9	46	7	0	62
<b>Total</b>	<b>140</b>	<b>515</b>	<b>220</b>	<b>9</b>	<b>884</b>

NEW WACT/OMT ROAD UNDER CONSTRUCTION (OUT) 15/7/2023					
Hours	Cat 1 (Motorcycle/keke)	Cat 2 (Car/light Vans)	Cat 3 (Lorries/Trucks)	Cat 4 (Buses/Coaches)	Total
6-7am	3	7	5	2	17
7-8am	10	13	15	1	39
8-9am	5	17	15	2	39
9-10am	4	3	3	3	13
10-11am	3	4	13	1	21
11-12am	3	5	17	2	27
12am-1pm	4	7	8	4	23
1-2pm	9	33	10	3	55
2-3pm	6	14	7	0	27
3-4pm	9	16	13	0	38
4-5pm	5	12	10	0	27
5-6pm	10	13	14	0	37
6-7pm	6	8	6	0	20
<b>Total</b>	<b>77</b>	<b>152</b>	<b>136</b>	<b>18</b>	<b>383</b>

NEW WACT/OMT ROAD UNDER CONSTRUCTION (OUT) 16/7/2023					
Hours	Cat 1 (Motorcycle/keke)	Cat 2 (Car/light Vans)	Cat 3 (Lorries/Trucks)	Cat 4 (Buses/Coaches)	Total
6-7am	3	7	5	1	16
7-8am	8	11	12	1	32
8-9am	5	15	13	1	34
9-10am	2	2	3	1	8
10-11am	3	4	8	1	16
11-12am	3	3	3	1	10
12am-1pm	2	6	6	1	15
1-2pm	4	9	6	0	19
2-3pm	0	10	12	0	22
3-4pm	4	5	6	0	15
4-5pm	4	9	16	0	29
5-6pm	14	9	9	0	32
6-7pm	9	11	9	0	29
<b>Total</b>	<b>61</b>	<b>101</b>	<b>108</b>	<b>7</b>	<b>277</b>

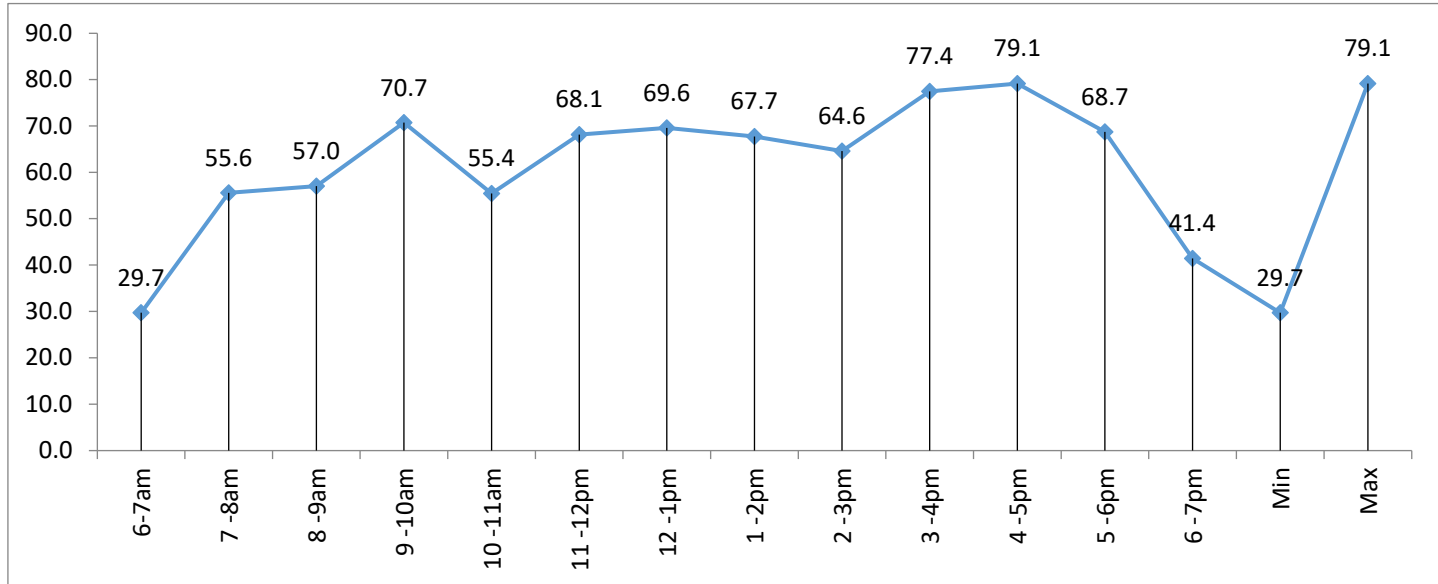
NEW WACT/OMT ROAD UNDER CONSTRUCTION (OUT) 17/7/2023					
Hours	Cat 1 (Motorcycle/keke)	Cat 2 (Car/light Vans)	Cat 3 (Lorries/Trucks)	Cat 4 (Buses/Coaches)	Total
6-7am	5	10	12	5	32
7-8am	13	10	8	2	33
8-9am	10	24	12	5	51
9-10am	11	38	19	1	69
10-11am	15	33	10	2	60
11-12am	18	50	40	15	123
12am-1pm	18	35	30	5	88
1-2pm	8	55	10	0	73
2-3pm	10	67	22	0	99
3-4pm	9	68	10	3	90
4-5pm	18	73	17	1	109
5-6pm	14	49	16	0	79
6-7pm	10	23	7	0	40
<b>Total</b>	<b>159</b>	<b>535</b>	<b>213</b>	<b>39</b>	<b>946</b>

NEW WACT/OMT ROAD UNDER CONSTRUCTION (OUT) 18/7/2023					
Hours	Cat 1 (Motorcycle/keke)	Cat 2 (Car/light Vans)	Cat 3 (Lorries/Trucks)	Cat 4 (Buses/Coaches)	Total
6-7am	7	12	5	2	26
7-8am	12	26	8	4	50
8-9am	3	25	12	3	43

Category	Thursday 13/7/23	Friday 14/7/23	Saturday 15/7/23	Sunday 16/7/23	Monday 17/7/23	Tuesday 18/7/23	Wednesday 19/7/23
Cat 1 (Motorcycle/Keke)	143	140	77	61	159	194	241
Cat 2 (Car and Light Vans)	483	515	152	101	535	520	571
Cat 3 (Lorries and Trucks)	257	220	136	108	213	264	403
Cat 4 (Buses and Coaches)	18	9	18	7	39	35	17
<b>Total</b>	<b>901</b>	<b>884</b>	<b>383</b>	<b>277</b>	<b>946</b>	<b>1013</b>	<b>1232</b>

Time	Thursday 13/7/23	Friday 14/7/23	Saturday 15/7/23	Sunday 16/7/23	Monday 17/7/23	Tuesday 18/7/23	Wednesday 19/7/23	Ave	Min	Max	Total
6-7am	43	38	17	16	32	26	36	29.7	16	43	208
7-8am	70	38	39	32	33	50	127	55.6	32	127	389
8-9am	70	53	39	34	51	43	109	57.0	34	109	399
9-10am	71	45	13	8	69	138	151	70.7	8	151	495
10-11am	75	49	21	16	60	74	93	55.4	16	93	388
11-12pm	51	82	27	10	123	74	110	68.1	10	123	477
12-1pm	82	81	23	15	88	101	97	69.6	15	101	487
1-2pm	65	94	55	19	73	85	83	67.7	19	94	474
2-3pm	60	66	27	22	99	95	83	64.6	22	99	452
3-4pm	90	87	38	15	90	115	107	77.4	15	115	542
4-5pm	98	102	27	29	109	90	99	79.1	27	109	554
5-6pm	91	87	37	32	79	81	74	68.7	32	91	481
6-7pm	35	62	20	29	40	41	63	41.4	20	63	290
<b>Total</b>	<b>901</b>	<b>884</b>	<b>383</b>	<b>277</b>	<b>946</b>	<b>1013</b>	<b>1232</b>	<b>805.1</b>	<b>266</b>	<b>1318</b>	<b>5636</b>

6-7am	7-8am	8-9am	9-10am	10-11am	11-12pm	12-1pm	1-2pm	2-3pm	3-4pm	4-5pm	5-6pm	6-7pm	Min	Max
29.7	55.6	57.0	70.7	55.4	68.1	69.6	67.7	64.6	77.4	79.1	68.7	41.4	29.7	79.1



9-10am	33	55	50	0	138
10-11am	15	35	22	2	74
11-12am	17	27	23	7	74
12am-1pm	18	37	38	8	101
1-2pm	12	55	15	3	85
2-3pm	15	59	21	0	95
3-4pm	14	75	23	3	115
4-5pm	17	50	22	1	90
5-6pm	19	45	16	1	81
6-7pm	12	19	9	1	41
<b>Total</b>	<b>194</b>	<b>520</b>	<b>264</b>	<b>35</b>	<b>1013</b>

NEW WACT/OMT ROAD UNDER CONSTRUCTION (OUT) 19/7/2023					
Hours	Cat 1 (Motorcycle/keke)	Cat 2 (Car/light Vans)	Cat 3 (Lorries/Trucks)	Cat 4 (Buses/Coaches)	Total
6-7am	9	13	12	2	36
7-8am	18	50	56	3	127
8-9am	24	40	43	2	109
9-10am	33	62	53	3	151
10-11am	10	45	38	0	93
11-12am	30	45	35	0	110
12am-1pm	27	29	41	0	97
1-2pm	17	47	17	2	83
2-3pm	16	49	18	0	83
3-4pm	11	61	31	4	107
4-5pm	20	58	21	0	99
5-6pm	11	44	18	1	74
6-7pm	15	28	20	0	63
<b>Total</b>	<b>241</b>	<b>571</b>	<b>403</b>	<b>17</b>	<b>1232</b>



NEW WACT/OMT ROAD TO PROJECT SITE (IN) 13/7/2023					
Hours	Cat 1 (Motorcycle/keke)	Cat 2 (Car/light Vans)	Cat 3 (Lorries/Trucks)	Cat 4 (Buses/Coaches)	Total
6-7am	0	0	1	0	1
7-8am	0	0	0	0	0
8-9am	1	0	0	0	1
9-10am	0	0	0	0	0
10-11am	0	0	0	0	0
11-12am	0	0	0	0	0
12am-1pm	0	0	0	0	0
1-2pm	0	0	0	0	0
2-3pm	0	1	0	1	2
3-4pm	1	0	0	0	1
4-5pm	0	0	0	1	1
5-6pm	0	0	0	0	0
6-7pm	0	0	0	0	0
<b>Total</b>	<b>2</b>	<b>1</b>	<b>1</b>	<b>2</b>	<b>6</b>

NEW WACT/OMT ROAD TO PROJECT SITE (IN) 1/7/2023					
Hours	Cat 1 (Motorcycle/keke)	Cat 2 (Car/light Vans)	Cat 3 (Lorries/Trucks)	Cat 4 (Buses/Coaches)	Total
6-7am	0	0	0	0	0
7-8am	0	2	1	0	3
8-9am	0	0	0	0	0
9-10am	0	1	0	0	1
10-11am	0	0	0	0	0
11-12am	1	0	1	0	2
12am-1pm	0	0	0	0	0
1-2pm	0	0	0	0	0
2-3pm	0	0	0	0	0
3-4pm	2	0	1	0	3
4-5pm	1	1	0	0	2
5-6pm	0	0	0	0	0
6-7pm	0	0	0	0	0
<b>Total</b>	<b>4</b>	<b>4</b>	<b>3</b>	<b>0</b>	<b>11</b>

NEW WACT/OMT ROAD TO PROJECT SITE (IN) 15/7/2023					
Hours	Cat 1 (Motorcycle/keke)	Cat 2 (Car/light Vans)	Cat 3 (Lorries/Trucks)	Cat 4 (Buses/Coaches)	Total
6-7am	0	0	0	0	0
7-8am	0	0	0	0	0
8-9am	0	0	0	0	0
9-10am	1	0	0	0	1
10-11am	0	0	0	0	0
11-12am	0	0	0	0	0
12am-1pm	0	0	0	0	0
1-2pm	0	0	0	0	0
2-3pm	0	0	0	0	0
3-4pm	0	0	0	0	0
4-5pm	0	0	0	0	0
5-6pm	0	0	0	0	0
6-7pm	0	0	0	0	0
<b>Total</b>	<b>1</b>	<b>0</b>	<b>0</b>	<b>0</b>	<b>1</b>

NEW WACT/OMT ROAD TO PROJECT SITE (IN) 16/7/2023					
Hours	Cat 1 (Motorcycle/keke)	Cat 2 (Car/light Vans)	Cat 3 (Lorries/Trucks)	Cat 4 (Buses/Coaches)	Total
6-7am	0	0	0	0	0
7-8am	0	0	1	0	1
8-9am	0	0	0	0	0
9-10am	0	0	0	0	0
10-11am	0	2	0	0	2
11-12am	0	1	0	0	1
12am-1pm	0	0	0	0	0
1-2pm	0	0	0	0	0
2-3pm	0	1	0	0	1
3-4pm	0	0	0	0	0
4-5pm	0	0	0	0	0
5-6pm	0	0	0	0	0
6-7pm	0	0	0	0	0
<b>Total</b>	<b>0</b>	<b>4</b>	<b>1</b>	<b>0</b>	<b>5</b>

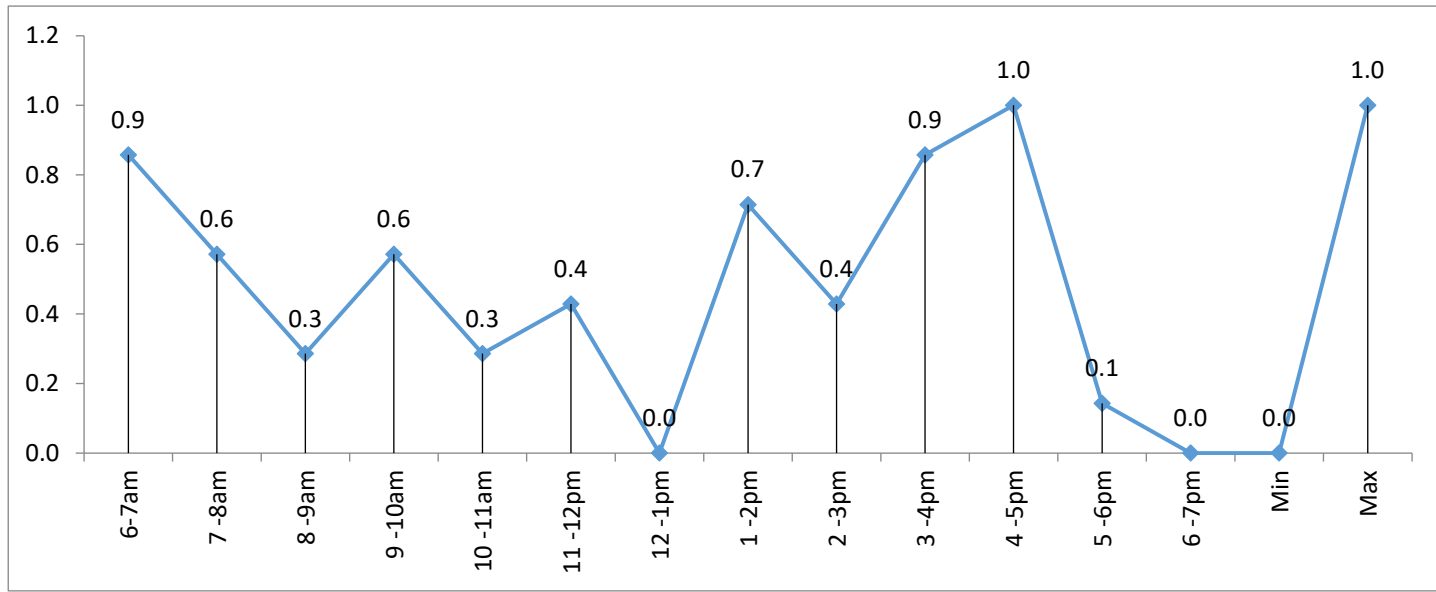
NEW WACT/OMT ROAD TO PROJECT SITE (IN) 17/7/2023					
Hours	Cat 1 (Motorcycle/keke)	Cat 2 (Car/light Vans)	Cat 3 (Lorries/Trucks)	Cat 4 (Buses/Coaches)	Total
6-7am	0	3	0	0	3
7-8am	0	0	0	0	0
8-9am	0	0	0	0	0
9-10am	0	1	1	0	2
10-11am	0	0	0	0	0
11-12am	0	0	0	0	0
12am-1pm	0	0	0	0	0
1-2pm	0	1	0	0	1
2-3pm	0	0	0	0	0
3-4pm	0	0	0	0	0
4-5pm	0	0	0	0	0
5-6pm	0	0	0	0	0
6-7pm	0	0	0	0	0
<b>Total</b>	<b>0</b>	<b>5</b>	<b>1</b>	<b>0</b>	<b>6</b>

NEW WACT/OMT ROAD TO PROJECT SITE (IN) 18/7/2023					
Hours	Cat 1 (Motorcycle/keke)	Cat 2 (Car/light Vans)	Cat 3 (Lorries/Trucks)	Cat 4 (Buses/Coaches)	Total
6-7am	1	1	0	0	2
7-8am	0	0	0	0	0
8-9am	0	0	0	0	0

Summary							
Category	Thursday 13/7/23	Friday 14/7/23	Saturday 15/7/23	Sunday 16/7/23	Monday 17/7/23	Tuesday 18/7/23	Wednesday 19/7/23
Cat 1 (Motorcycle/Keke)	2	4	1	0	0	3	1
Cat 2 (Car and Light Vans)	1	4	0	4	5	7	3
Cat 3 (Lorries and Trucks)	1	3	0	1	1	0	0
Cat 4 (Buses and Coaches)	2	0	0	0	0	0	0
<b>Total</b>	<b>6</b>	<b>11</b>	<b>1</b>	<b>5</b>	<b>6</b>	<b>10</b>	<b>4</b>

Time	Thursday 13/7/23	Friday 14/7/23	Saturday 15/7/23	Sunday 16/7/23	Monday 17/7/23	Tuesday 18/7/23	Wednesday 19/7/23	Ave	Min	Max	Total
6-7am	1	0	0	0	3	2	0	0.9	0	3	6
7-8am	0	3	0	1	0	0	0	0.6	0	3	4
8-9am	1	0	0	0	0	0	1	0.3	0	1	2
9-10am	0	1	1	0	2	0	0	0.6	0	2	4
10-11am	0	0	0	2	0	0	0	0.3	0	2	2
11-12pm	0	2	0	1	0	0	0	0.4	0	2	3
12-1pm	0	0	0	0	0	0	0	0.0	0	0	0
1-2pm	0	0	0	0	1	4	0	0.7	0	4	5
2-3pm	2	0	0	1	0	0	0	0.4	0	2	3
3-4pm	1	3	0	0	0	0	2	0.9	0	3	6
4-5pm	1	2	0	0	0	3	1	1.0	0	3	7
5-6pm	0	0	0	0	0	1	0	0.1	0	1	1
6-7pm	0	0	0	0	0	0	0	0.0	0	0	0
<b>Total</b>	<b>6</b>	<b>11</b>	<b>1</b>	<b>5</b>	<b>6</b>	<b>10</b>	<b>4</b>	<b>6.1</b>	<b>0</b>	<b>26</b>	<b>43</b>

6-7am	7-8am	8-9am	9-10am	10-11am	11-12pm	12-1pm	1-2pm	2-3pm	3-4pm	4-5pm	5-6pm	6-7pm	Min	Max
0.9	0.6	0.3	0.6	0.3	0.4	0.0	0.7	0.4	0.9	1.0	0.1	0.0	0.0	1.0



9-10am	0	0	0	0	0
10-11am	0	0	0	0	0
11-12am	0	0	0	0	0
12am-1pm	0	0	0	0	0
1-2pm	1	3	0	0	4
2-3pm	0	0	0	0	0
3-4pm	0	0	0	0	0
4-5pm	0	3	0	0	3
5-6pm	1	0	0	0	1
6-7pm	0	0	0	0	0
<b>Total</b>	<b>3</b>	<b>7</b>	<b>0</b>	<b>0</b>	<b>10</b>

NEW WACT/OMT ROAD TO PROJECT SITE (IN) 19/7/2023					
Hours	Cat 1 (Motorcycle/keke)	Cat 2 (Car/light Vans)	Cat 3 (Lorries/Trucks)	Cat 4 (Buses/Coaches)	Total
6-7am	0	0	0	0	0
7-8am	0	0	0	0	0
8-9am	0	1	0	0	1
9-10am	0	0	0	0	0
10-11am	0	0	0	0	0
11-12am	0	0	0	0	0
12am-1pm	0	0	0	0	0
1-2pm	0	0	0	0	0
2-3pm	0	0	0	0	0
3-4pm	0	2	0	0	2
4-5pm	1	0	0	0	1
5-6pm	0	0	0	0	0
6-7pm	0	0	0	0	0
<b>Total</b>	<b>1</b>	<b>3</b>	<b>0</b>	<b>0</b>	<b>4</b>

FROM WACT TO PROJECT SITE (OUT) 13/7/2023					
Hours	Cat 1 (Motorcycle/keke)	Cat 2 (Car/light Vans)	Cat 3 (Lorries/Trucks)	Cat 4 (Buses/Coaches)	Total
6-7am	0	0	0	0	0
7-8am	0	0	0	0	0
8-9am	0	0	0	0	0
9-10am	0	0	0	0	0
10-11am	0	0	0	0	0
11-12am	0	0	0	0	0
12am-1pm	0	0	1	0	1
1-2pm	0	0	0	0	0
2-3pm	0	0	0	0	0
3-4pm	0	0	0	0	0
4-5pm	0	2	0	0	2
5-6pm	1	0	0	0	1
6-7pm	0	0	0	0	0
<b>Total</b>	<b>1</b>	<b>2</b>	<b>1</b>	<b>0</b>	<b>4</b>

FROM WACT TO PROJECT SITE (OUT) 14/7/2023					
Hours	Cat 1 (Motorcycle/keke)	Cat 2 (Car/light Vans)	Cat 3 (Lorries/Trucks)	Cat 4 (Buses/Coaches)	Total
6-7am	0	0	0	0	0
7-8am	0	0	0	0	0
8-9am	0	0	0	0	0
9-10am	0	0	1	0	1
10-11am	0	0	0	0	0
11-12am	0	0	0	0	0
12am-1pm	0	0	0	0	0
1-2pm	1	1	0	0	2
2-3pm	1	0	0	0	1
3-4pm	2	1	0	0	3
4-5pm	0	0	0	0	0
5-6pm	0	0	0	0	0
6-7pm	0	0	0	0	0
<b>Total</b>	<b>4</b>	<b>2</b>	<b>1</b>	<b>0</b>	<b>7</b>

FROM WACT TO PROJECT SITE (OUT) 15/7/2023					
Hours	Cat 1 (Motorcycle/keke)	Cat 2 (Car/light Vans)	Cat 3 (Lorries/Trucks)	Cat 4 (Buses/Coaches)	Total
6-7am	0	0	0	0	0
7-8am	0	0	0	0	0
8-9am	0	0	0	0	0
9-10am	0	0	0	0	0
10-11am	0	0	0	0	0
11-12am	1	0	0	0	1
12am-1pm	0	0	1	0	1
1-2pm	0	0	0	0	0
2-3pm	1	0	0	0	1
3-4pm	0	2	0	0	2
4-5pm	0	0	0	0	0
5-6pm	1	1	0	0	2
6-7pm	0	1	0	0	1
<b>Total</b>	<b>3</b>	<b>4</b>	<b>1</b>	<b>0</b>	<b>8</b>

FROM WACT TO PROJECT SITE (OUT) 16/7/2023					
Hours	Cat 1 (Motorcycle/keke)	Cat 2 (Car/light Vans)	Cat 3 (Lorries/Trucks)	Cat 4 (Buses/Coaches)	Total
6-7am	0	0	0	0	0
7-8am	0	0	0	0	0
8-9am	0	0	1	0	1
9-10am	0	0	0	0	0
10-11am	0	0	0	0	0
11-12am	0	1	0	0	1
12am-1pm	0	2	0	0	2
1-2pm	0	0	0	0	0
2-3pm	0	0	0	0	0
3-4pm	0	1	0	0	1
4-5pm	0	0	0	0	0
5-6pm	0	0	0	0	0
6-7pm	0	0	0	0	0
<b>Total</b>	<b>0</b>	<b>4</b>	<b>1</b>	<b>0</b>	<b>5</b>

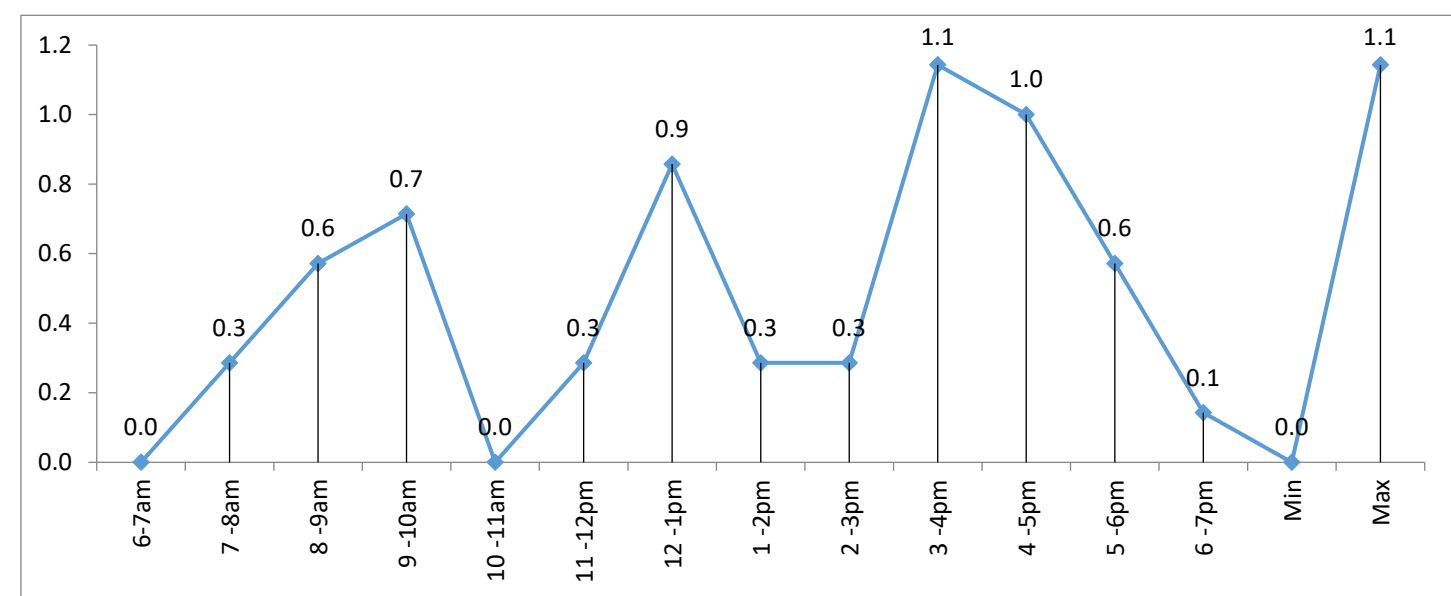
FROM WACT TO PROJECT SITE (OUT) 17/7/2023					
Hours	Cat 1 (Motorcycle/keke)	Cat 2 (Car/light Vans)	Cat 3 (Lorries/Trucks)	Cat 4 (Buses/Coaches)	Total
6-7am	0	0	0	0	0
7-8am	0	0	0	0	0
8-9am	0	3	0	0	3
9-10am	0	1	1	0	2
10-11am	0	0	0	0	0
11-12am	0	0	0	0	0
12am-1pm	0	0	1	0	1
1-2pm	0	0	0	0	0
2-3pm	0	0	0	0	0
3-4pm	0	1	0	0	1
4-5pm	0	0	0	0	0
5-6pm	0	0	0	0	0
6-7pm	0	0	0	0	0
<b>Total</b>	<b>0</b>	<b>5</b>	<b>2</b>	<b>0</b>	<b>7</b>

FROM WACT TO PROJECT SITE (OUT) 18/7/2023					
Hours	Cat 1 (Motorcycle/keke)	Cat 2 (Car/light Vans)	Cat 3 (Lorries/Trucks)	Cat 4 (Buses/Coaches)	Total
6-7am	0	0	0	0	0
7-8am	1	1	0	0	2
8-9am	0	0	0	0	0

Summary							
Category	Thursday 13/7/23	Friday 14/7/23	Saturday 15/7/23	Sunday 16/7/23	Monday 17/7/23	Tuesday 18/7/23	Wednesday 19/7/23
Cat 1 (Motorcycle/Keke)	1	4	3	0	0	1	0
Cat 2 (Car and Light Vans)	2	2	4	4	5	6	3
Cat 3 (Lorries and Trucks)	1	1	1	1	2	0	2
Cat 4 (Buses and Coaches)	0	0	0	0	0	0	0
<b>Total</b>	<b>4</b>	<b>7</b>	<b>8</b>	<b>5</b>	<b>7</b>	<b>7</b>	<b>5</b>

Time	Thursday 13/7/23	Friday 14/7/23	Saturday 15/7/23	Sunday 16/7/23	Monday 17/7/23	Tuesday 18/7/23	Wednesday 19/7/23	Ave	Min	Max	Total
6-7am	0	0	0	0	0	0	0	0.0	0	0	0
7-8am	0	0	0	0	0	2	0	0.3	0	2	2
8-9am	0	0	0	1	3	0	0	0.6	0	3	4
9-10am	0	1	0	0	2	0	2	0.7	0	2	5
10-11am	0	0	0	0	0	0	0	0.0	0	0	0
11-12pm	0	0	1	1	0	0	0	0.3	0	1	2
12-1pm	1	0	1	2	1	0	1	0.9	0	2	6
1-2pm	0	2	0	0	0	0	0	0.3	0	2	2
2-3pm	0	1	1	0	0	0	0	0.3	0	1	2
3-4pm	0	3	2	1	1	1	0	1.1	0	3	8
4-5pm	2	0	0	0	0	3	2	1.0	0	3	7
5-6pm	1	0	2	0	0	1	0	0.6	0	2	4
6-7pm	0	0	1	0	0	0	0	0.1	0	1	1
<b>Total</b>	<b>4</b>	<b>7</b>	<b>8</b>	<b>5</b>	<b>7</b>	<b>7</b>	<b>5</b>	<b>6.1</b>	<b>0</b>	<b>22</b>	<b>43</b>

6-7am	7-8am	8-9am	9-10am	10-11am	11-12pm	12-1pm	1-2pm	2-3pm	3-4pm	4-5pm	5-6pm	6-7pm	Min	Max
0.0	0.3	0.6	0.7	0.0	0.3	0.9	0.3	0.3	1.1	1.0	0.6	0.1	0.0	1.1



9-10am	0	0	0	0	0
10-11am	0	0	0	0	0
11-12am	0	0	0	0	0
12am-1pm	0	0	0	0	0
1-2pm	0	0	0	0	0
2-3pm	0	0	0	0	0
3-4pm	0	1	0	0	1
4-5pm	0	3	0	0	3
5-6pm	0	1	0	0	1
6-7pm	0	0	0	0	0
<b>Total</b>	<b>1</b>	<b>6</b>	<b>0</b>	<b>0</b>	<b>7</b>

1 6 0 0

FROM WACT TO PROJECT SITE (OUT) 19/7/2023					
Hours	Cat 1 (Motorcycle/keke)	Cat 2 (Car/light Vans)	Cat 3 (Lorries/Trucks)	Cat 4 (Buses/Coaches)	Total
6-7am	0	0	0	0	0
7-8am	0	0	0	0	0
8-9am	0	0	0	0	0
9-10am	0	1	1	0	2
10-11am	0	0	0	0	0
11-12am	0	0	0	0	0
12am-1pm	0	0	1	0	1
1-2pm	0	0	0	0	0
2-3pm	0	0	0	0	0
3-4pm	0	0	0	0	0
4-5pm	0	2	0	0	2
5-6pm	0	0	0	0	0
6-7pm	0	0	0	0	0
<b>Total</b>	<b>0</b>	<b>3</b>	<b>2</b>	<b>0</b>	<b>5</b>

0 3 2 0